



ULM Warhawks Men's Basketball

University of Louisiana at Monroe



ULM (11-6, 5-1 SBC)
WARHAWKS

Vs.

UL-Lafayette (10-7, 4-2 SBC)

RAGIN' CAJUNS



Game 18

Monday, Jan. 19, 2015 • 7:15 p.m.

Cajundome (11,500) • Lafayette, La.

Live Stream: Ragin' Cajuns All-Access (Online Only)

Radio: KLIP LA 105.3 FM, Nick White (PXP)

Twitter: @ULM_MBB

ULM Quick Notes

- ULM enters the game on a five-game winning streak. It's the longest SBC winning streak in school history. ULM has won five league games in-a-row for the first time since 2001-02 when it was a member of the Southland Conference. It's looking to win six consecutive conference games for the first time since 1998-99

- Most recently, the Warhawks swept a home weekend to improve to 8-0 on the season at Fant-Ewing Coliseum. They defeated Troy, 63-54 and UALR, 64-52

- ULM sits alone in first-place in the SBC standings, one game ahead of both UL-Lafayette and Georgia Southern who are 4-2

- The Warhawks and the Cajuns split the season series last year with each team winning at home

- The Warhawks have already surpassed their overall win total from last season when they finished 10-17. They still have 14 regular season games still remaining

- On the season, ULM ranks first in the SBC and top-25 in the nation in both field goal (.373) and three-point field goal percentage defense (.283). The Warhawks also lead the league in blocks (5.0 bpg) and are second in scoring defense (60.7 ppg) and assist:turnover ratio (1.2)

- In conference games only, the Warhawks are first in the SBC scoring defense (60.7 ppg), field goal percentage defense (.283) and defensive rebounding percentage (.726). Williams leads the league in field goal percentage (.706) and offensive rebounds (2.7 orpg)

- Senior Tylor Ongwae leads the team in scoring with 13.9 points per game and also grabs 6.6 rebounds. He's coming off a 13-point, nine-rebound performance on Saturday. He's shooting .877 FT% on the year and .950 in SBC games

- In conference games only, senior Marvin Williams leads the team with 14.5 points and 7.0 rebounds per game

ULM MEN'S BASKETBALL SCHEDULE

| | | |
|-----------------------|---------------------------|------------------|
| Sat, Nov. 15 | # at UAB | W, 74-65 |
| Mon, Nov. 17 | Champion Baptist | W, 106-39 |
| Fri, Nov. 21 | # at No. 8 Florida | L, 61-56 (OT) |
| Wed, Nov. 26 | # vs. Coastal Carolina | L, 61-48 |
| Thurs, Nov. 27 | # vs. Robert Morris | L, 71-54 |
| Sat, Dec. 6 | Louisiana College | W, 83-55 |
| Tues, Dec. 9 | Northwestern State | W, 82-74 |
| Sat, Dec. 13 | at New Mexico | L, 54-46 |
| Tues, Dec. 16 | Central Baptist | W, 78-53 |
| Fri, Dec. 19 | LSU-Alexandria | W, 76-71 |
| Sun, Dec. 21 | at Samford | L, 64-50 |
| Tues, Dec. 30 | at Georgia State* | L, 65-45 |
| Mon, Jan. 5 | Arkansas State* | W, 70-61 |
| Thurs, Jan. 8 | at UT Arlington* | W, 76-73 (OT) |
| Sat, Jan. 10 | at Texas State* | W, 62-59 |
| Thurs, Jan. 15 | Troy* | W, 63-54 |
| Sat, Jan. 17 | UALR* | W, 64-52 |
| Mon, Jan. 19 | at UL-Lafayette* | 7:15 PM |
| Thurs, Jan. 22 | UT Arlington* | 7:00 PM |
| Sat, Jan. 24 | Georgia Southern* | 4:00 PM |
| Thurs, Jan. 29 | at Troy* | 7:30 PM |
| Sat, Jan. 31 | South Alabama* | 4:00 PM |
| Thurs, Feb. 5 | at UALR* | 7:30 PM |
| Sat, Feb. 7 | at Georgia Southern* | 6:30 PM |
| Thurs, Feb. 12 | UL-Lafayette* | 7:00 PM |
| Sat, Feb. 14 | Appalachian State* | 2:00 PM |
| Sat, Feb. 21 | at Arkansas State* | 7:05 PM |
| Thurs, Feb. 26 | at South Alabama* | 7:05 PM |
| Sat, Feb. 28 | at Appalachian State* | 2:30 PM |
| Thurs, March 5 | Georgia State* | 7:00 PM |
| Sat, March 7 | Texas State* | 4:00 PM |
| Thurs, March 12 | SBC Championships% | TBA |

All times Central and subject to change. **Bold** indicates home game; *-Sun Belt game; %-SBC Tournament; #Battle 4 Atlantis

We are ULM. Please note that there are only two correct versions of our institution's name, the preferred acronym ULM and the full name, the University of Louisiana at Monroe. Any other reference, including Louisiana-Monroe, UL-Monroe, La.-Monroe, LAM, or simply Monroe, are incorrect.

Media Relations Contacts

| | |
|-----------------------------|---------------------------|
| Robbie Kleinmuntz (Primary) | Michael Garabedian |
| Assistant Director | Graduate Assistant |
| kleinmuntz@ulm.edu | garabemc@warhawks.ulm.edu |
| O: 318-342-5462 | O: 318-342-5461 |
| C: 847-912-5380 | C: 305-926-8420 |



ULM Warhawks Men's Basketball

University of Louisiana at Monroe



Keith Richard
Head Coach

Fifth Year at ULM
14th Season Overall

Alma Mater: ULM (1982)

THE RICHARD FILE

COACHING HONORS

- 1999 Sun Belt Coach of the Year
- Has been part of the coaching staff for seven NCAA Tournament and three NIT teams

COACHING CAREER

| Season | School | Position | Record |
|---------|----------|----------------------|------------|
| 1984-85 | ULM | Graduate Assistant | 17-12 |
| 1985-86 | ULM | Graduate Assistant | 20-10/NCAA |
| 1986-87 | Marshall | Assistant Coach | 25-6/NCAA |
| 1987-88 | Marshall | Assistant Coach | 24-8/NIT |
| 1988-89 | Marshall | Assistant Coach | 15-15 |
| 1989-90 | ULM | Assistant Coach | 22-8/NCAA |
| 1990-91 | ULM | Assistant Coach | 25-8/NCAA |
| 1991-92 | ULM | Assistant Coach | 19-10/NCAA |
| 1992-93 | ULM | Assistant Coach | 26-5/NCAA |
| 1993-94 | ULM | Assistant Coach | 19-9 |
| 1994-95 | La. Tech | Assistant Coach | 14-13 |
| 1995-96 | La. Tech | Associate Head Coach | 11-17 |
| 1996-97 | La. Tech | Associate Head Coach | 15-14 |
| 1997-98 | La. Tech | Associate Head Coach | 12-15 |
| 1998-99 | La. Tech | Head Coach | 19-9 |
| 1999-00 | La. Tech | Head Coach | 21-8 |
| 2000-01 | La. Tech | Head Coach | 17-12 |
| 2001-02 | La. Tech | Head Coach | 22-10/NIT |
| 2002-03 | La. Tech | Head Coach | 12-15 |
| 2003-04 | La. Tech | Head Coach | 15-15 |
| 2004-05 | La. Tech | Head Coach | 14-15 |
| 2005-06 | La. Tech | Head Coach | 20-13/NIT |
| 2006-07 | La. Tech | Head Coach | 10-20 |
| 2008-09 | LSU | Assistant Coach | 27-8/NCAA |
| 2009-10 | LSU | Assistant Coach | 11-20 |
| 2010-11 | ULM | Head Coach | 7-24 |
| 2011-12 | ULM | Head Coach | 3-26 |
| 2012-13 | ULM | Head Coach | 4-23 |
| 2013-14 | ULM | Head Coach | 10-17 |
| 2014-15 | ULM | Head Coach | 11-6 |

PLAYING CAREER

- Played for ULM from 1978-82; Coached by Lenny Fant, Benny Hollis & Mike Vining
- 1979 Atlantic Sun Tournament Champions, NIT
- 1980 Atlantic Sun Regular Season Champions
- 1982 Atlantic Sun Tournament Champions, NCAA
- Two-time team captain ('81 & '82)
- Led team in assists twice

EDUCATION

- Bachelor's degree in general business, ULM (1982)
- Master's degree in guidance counseling, ULM (1986)

ULM Quick Notes Continued...

- Williams played a huge role in beginning the five-game winning streak. After the first three victories, he was named Sun Belt Conference Player of the Week and Co-Louisiana Player of the Week on Jan. 12, 2015. Williams shot 26-33 (.798) and averaged 20.7 points over the 3-0 week. He posted a career-high 22 points and 13 rebounds over the Red Wolves and then matched his scoring high with 22 points against the Mavs

- Two of the wins came on the road and in opposite fashion. ULM trailed UTA by double-figures in the second half before coming back to win in overtime. Against Texas State, it led by double-digits in the second half before the Bobcats came back to tie it, but the Warhawks held them off in the end

- ULM is in the midst of a stretch of three games in five days and five games in nine days

- Sophomore Nick Coppola is coming off a team-high 15-point performance against UALR. He ranks second in the league in assist:turnover ratio (2.3) and third in assists (4.5 apg). Coppola has played at least 40 minutes six times this year and 15 times in his career

- Junior Majok Deng is coming off a big weekend where he averaged a double-double with 15 points and 10.5 rebounds. He scored a team-high 16 points against Troy and followed it up with 14 points and a career-high 15 rebounds against UALR. It was his fourth double-double of the year. Deng leads the team in rebounding with 7.3 per game and also scores 9.1 points per outing. He ranks second in the league in blocks (1.7 bpg) and third in defensive rebounds (5.5 drpg)

- Junior Justin Roberson netted 12 points off the bench in ULM's last game against UALR. He made a career-high eight free throws (8-9). It marked his eighth double-figure scoring game of the year

- ULM is the only team in the SBC that has not allowed 80 points in a single game this season. The most the team let up was 74 points to Northwestern State in a win. It allowed 73 points in overtime at UT Arlington in another win

- The Warhawks are 10-0 on the season when they have at least three double-figure scorers and 6-0 when they shoot over 50 percent from the field

- ULM has had five different players tally a double-double and eight different players reach double-figure scoring in a game this season

- Last Thursday's win over UTA improved Keith Richard's overtime record to 18-9 in his head coaching career, which includes nine seasons at Louisiana Tech

- Ongwae won Co-Louisiana Player of the Week on Dec. 22, 2014 and Sun Belt Conference Player of the Week on Nov. 18, 2014. He was named to the Preseason All-SBC Second-Team after earning four postseason awards in 2013-14

- The Warhawks have had two different players earn SBC Player of the Week honors in the same season for the first time since joining the league in 2005-06

- ULM closed out non-conference play with a winning record for the first time since 2007-08

- Earlier this season, ULM took eighth-ranked Florida to overtime. Coppola hit a three-pointer with 19 seconds left to level the score at 51. ULM led 54-53 with 3:00 remaining in overtime after a three-point play from Ongwae

- The 61 points allowed versus No. 8 Florida was the lowest ULM has ever let up against a ranked opponent in program history



ULM Warhawks Men's Basketball

University of Louisiana at Monroe



ULM Quick Notes Continued...

- ULM hung around in front of 13,710 fans at The Pit against New Mexico in a closely contested 54-46 decision. ULM went on an 11-0 run in the second half to make it a six-point game with 3:48 remaining

- The Warhawks posted a historic 106-39 victory over Champion Baptist in their home opener. The 67-point win broke the school record for largest margin of victory. It was also the most points ULM scored in a game since Feb. 17, 2001 in a game against UTSA. Additionally, the 67-point victory is the largest of any game in the Sun Belt Conference this season

- The Warhawks followed it up with a 28-point home win over Louisiana College as both Deng and Coppola recorded double-doubles

- ULM has had two players tally double-doubles in the same game twice this season, both at home (against La. College and Northwestern St.)

- Coppola dished out a career-high 12 assists against Louisiana College. Coppola started all 27 games last year at point guard as a true freshman and has started every game of his career

- The Warhawks opened the season with a 74-65 victory on the road over UAB. It was the first opening night victory for ULM since Nov. 14, 2008 when it defeated Morehead State, 56-54 and the first opening night road win since Nov. 23, 1999 when it won at Samford, 67-60. Additionally, it was the largest opening night road victory since Dec. 1, 1979 when it beat Nicholls State, 79-69

- ULM has 15 home games on the 2014-15 schedule, the most since 1985-86

- Keith and Lance Richard have gone up against four other father/son duos this season. The Richard's took on Josiah/Eric Capaci at Champion Baptist, Billy/Billy Donovan at Florida, Cullen/Craig Neal at New Mexico and Ron/R.J. Hunter at Georgia State

- The Warhawks were tabbed for sixth in the Sun Belt Conference Preseason Poll. They return three starters and six players overall on a team that more-than doubled both its overall and conference win totals

- Last season, Williams notched a 19-point performance against No. 5 Kansas and outscored both Andrew Wiggins and Joel Embiid, the first and third picks of the NBA draft

- The Warhawks enter the 2014-15 season without any APR penalties for the first time in five years. ULM head coach Keith Richard has turned the program around academically since inheriting APR sanctions when he took over at the helm, and the Warhawks have won back-to-back Sun Belt Conference academic awards

- For the first time since the NCAA instituted academic progress rate (APR) scores in 2003-04, the ULM men's basketball program tallied a perfect 1,000 score in the 2013-14 season. Over the summer, ULM was the only Division I institution in the state of Louisiana to earn the Team Academic Excellence award from the NABC

- The ULM men's basketball program will honor legendary former head coach Mike Vining by raising a banner featuring the number "402" in a special halftime ceremony during the Warhawks game on Saturday, Jan. 24, 2015 against Georgia Southern at Fant-Ewing Coliseum. The 402 represents the total number of Vining's regular season and post-season victories over his 24 seasons as ULM head coach from 1981-2005

HOME COURT ADVANTAGE

398-169 All-Time in Fant-Ewing Coliseum

ULM RECORDS IN FANT-EWING

| Year | Games | Record | Pct. | Avg. Attend. |
|---------|-------|---------|-------|--------------|
| 1971-72 | 10 | 6-4 | .600 | 4,190 |
| 1972-73 | 11 | 8-3 | .727 | 3,232 |
| 1973-74 | 11 | 8-3 | .727 | 3,250 |
| 1974-75 | 12 | 11-1 | .917 | 3,454 |
| 1975-76 | 13 | 10-3 | .769 | 5,451 |
| 1976-77 | 13 | 9-4 | .692 | 5,073 |
| 1977-78 | 13 | 10-3 | .769 | 4,459 |
| 1978-79 | 16 | 15-1 | .937 | 5,215 |
| 1979-80 | 14 | 10-4 | .714 | 3,678 |
| 1980-81 | 16 | 8-8 | .500 | 3,067 |
| 1981-82 | 16 | 13-3 | .812 | 3,808 |
| 1982-83 | 14 | 12-2 | .857 | 2,946 |
| 1983-84 | 16 | 11-5 | .688 | 2,098 |
| 1984-85 | 13 | 9-4 | .692 | 2,380 |
| 1985-86 | 15 | 14-1 | .933 | 2,114 |
| 1986-87 | 13 | 8-5 | .615 | 2,582 |
| 1987-88 | 12 | 10-2 | .833 | 2,582 |
| 1988-89 | 12 | 8-4 | .667 | 2,861 |
| 1989-90 | 14 | 13-1 | .928 | 2,949 |
| 1990-91 | 14 | 14-0 | 1.000 | 3,327 |
| 1991-92 | 12 | 9-3 | .750 | 2,710 |
| 1992-93 | 14 | 14-0 | 1.000 | 3,892 |
| 1993-94 | 14 | 10-4 | .714 | 3,351 |
| 1994-95 | 12 | 9-3 | .750 | 3,619 |
| 1995-96 | 11 | 8-3 | .727 | 2,182 |
| 1996-97 | 12 | 9-3 | .750 | 1,822 |
| 1997-98 | 11 | 7-4 | .636 | 1,301 |
| 1998-99 | 11 | 7-4 | .636 | 1,913 |
| 1999-00 | 14 | 11-3 | .786 | 2,003 |
| 2000-01 | 13 | 9-4 | .692 | 935 |
| 2001-02 | 12 | 12-0 | 1.000 | 3,437 |
| 2002-03 | 12 | 7-5 | .583 | 1,412 |
| 2003-04 | 13 | 9-4 | .692 | 1,624 |
| 2004-05 | 13 | 6-7 | .462 | 1,296 |
| 2005-06 | 13 | 8-5 | .615 | 793 |
| 2006-07 | 14 | 14-0 | 1.000 | 1,952 |
| 2007-08 | 12 | 5-7 | .417 | 1,338 |
| 2008-09 | 14 | 8-6 | .571 | 907 |
| 2009-10 | 14 | 8-6 | .571 | 1,398 |
| 2010-11 | 13 | 4-9 | .308 | 1,400 |
| 2011-12 | 13 | 0-13 | .000 | 1,438 |
| 2012-13 | 12 | 3-9 | .250 | 1,255 |
| 2013-14 | 12 | 6-6 | .500 | 1,513 |
| 2014-15 | 8 | 8-0 | 1.000 | 1,295 |
| TOTALS | 567 | 398-169 | .702 | |



ULM Warhawks Men's Basketball

University of Louisiana at Monroe



WE ARE ULM

12 REGULAR SEASON CHAMPIONSHIPS

1961-62 - Gulf States Conference
 1964-65 - Gulf States Conference
 1978-79 - Atlantic Sun Conference
 1979-80 - Atlantic Sun Conference
 1985-86 - Southland Conference
 1989-90 - Southland Conference
 1990-91 - Southland Conference
 1992-93 - Southland Conference
 1993-94 - Southland Conference
 1995-96 - Southland Conference
 1996-97 - Southland Conference
 2006-07 - Sun Belt Conference West Division

NINE POST-SEASON APPEARANCES

1978-79 - NIT
 1981-82 - NCAA Tournament
 1985-86 - NCAA Tournament
 1987-88 - NIT
 1989-90 - NCAA Tournament
 1990-91 - NCAA Tournament
 1991-92 - NCAA Tournament
 1992-93 - NCAA Tournament
 1995-96 - NCAA Tournament

EIGHT TOURNAMENT CHAMPIONSHIPS

1978-79 - Atlantic Sun Conference
 1981-82 - Atlantic Sun Conference
 1985-86 - Southland Conference
 1989-90 - Southland Conference
 1990-91 - Southland Conference
 1991-92 - Southland Conference
 1992-93 - Southland Conference
 1995-96 - Southland Conference

Numerical Roster

| No. | Player | Pos. | Ht. | Wt. | Cl. | Hometown (Previous School) |
|-----|------------------|------|------|-----|------|--|
| 0 | Williams, Marvin | C | 6-8 | 245 | Sr. | Memphis, Tenn. (NW Florida State College) |
| 1 | Brown, Alex | G | 6-4 | 185 | Fr. | Vernon, Fla. (Vernon HS) |
| 2 | Harvey, DeMondre | F | 6-7 | 210 | Jr. | Minden, La. (Pearl River CC) |
| 3 | Cooper, Prince | G | 6-4 | 215 | So. | Freeport, Bahamas (Miami-Dade College) |
| 4 | Foster, Mack | G | 6-2 | 185 | Jr. | Beulah, Miss. (East Mississippi CC) |
| 5 | Samuel, Jamaal | F | 6-9 | 205 | Jr. | New Orleans, La. (Illinois State) |
| 10 | Taylor, Roderick | F | 6-8 | 210 | Fr. | Harker Heights, Texas (Harker Heights HS) |
| 11 | Coppola, Nick | G | 5-11 | 190 | So. | Richmond, Va. (Benedictine Prep) |
| 12 | Ongwae, Tylor | F | 6-7 | 205 | Sr. | Eldoret, Kenya (Ranger College) |
| 13 | Deng, Majok | F | 6-10 | 190 | Jr. | Adelaide, Australia (Indian Hills CC) |
| 20 | Amajoyi, Chinedu | G | 6-3 | 195 | Sr. | Rancho Cucamonga, Calif. (Kilgore College) |
| 22 | Richard, Lance | G | 5-10 | 175 | RFr. | Monroe, La. (Sterlington HS) |
| 32 | Roberson, Justin | G | 6-1 | 185 | Jr. | Natchitoches, La. (Western Texas) |

COACHING STAFF

Head Coach: Keith Richard (ULM '82)
 Assistant Coach: Ryan Cross (Buffalo '95)
 Assistant Coach: Lonnie Cooper (Louisiana Tech '99)

Assistant Coach: J.A. Anglin (LSU Shreveport '10)
 Graduate Assistant: Luke Richard
 Team Manager: Gil Williams

PRONUNCIATION

Keith/Lance/Luke RICHARD Ree-SHARD
 CHINEDU OMAJOYI Chin-ih-due Om-uh-joy
 TYLOR ONGWAE Tie-ler Ong-why
 MAJOK Deng Muh-jook
 Justin ROBERSON Rob-er-sin
 Nick COPPOLA Cuh-pole-uh



BY CLASS

Seniors (3)..... Chinedu Amajoyi
 Tylor Ongwae
 Marvin Williams
 Juniors (5) Majok Deng
 Mack Foster
 DeMondre Harvey
 Justin Roberson
 Jamaal Samuel
 Sophomores (2) Prince Cooper
 Nick Coppola
 Freshmen (3)..... Alex Brown
 Lance Richard
 Roderick Taylor

BY POSITION

Guards (7) Chinedu Amajoyi
 Alex Brown
 Prince Cooper
 Nick Coppola
 Mack Foster
 Lance Richard
 Justin Roberson
 Forwards (5)..... Majok Deng
 DeMondre Harvey
 Tylor Ongwae
 Jamaal Samuel
 Roderick Taylor
 Center (1) Marvin Williams

BY STATE/COUNTRY

Australia..... Majok Deng
 Bahamas Prince Cooper
 California..... Chinedu Amajoyi
 Florida..... Alex Brown
 Kenya Tylor Ongwae
 Louisiana (4) DeMondre Harvey
 Lance Richard
 Justin Roberson
 Jamaal Samuel
 Mississippi..... Mack Foster
 Tennessee Marvin Williams
 Texas Roderick Taylor
 Virginia Nick Coppola



ULM Warhawks Men's Basketball

University of Louisiana at Monroe



ULM Quick Facts

Location _____ Monroe, La.
 Enrollment _____ 8,527
 Founded _____ 1931
 Nickname/Mascot _____ Warhawks/Ace
 Colors _____ Maroon & Gold
 President _____ Dr. Nick Bruno
 Director of Athletics _____ Brian Wickstrom
 Conference _____ Sun Belt
 Affiliation _____ NCAA Division I
 All-Time Record _____ 919-816 (63rd season)
 Winning Seasons _____ 38 (20+ wins 10 times)
 Home Venue _____ Fant-Ewing Coliseum (7000)
 Playing Surface _____ Maple
 Opened _____ 1971
 Press Row Phone _____ 318-342-6920

Head Coach _____ Keith Richard
 Record at ULM _____ 35-96 (fifth year)
 Career Record _____ 185-213 (14th year)
 Assistant Coach _____ Ryan Cross
 Assistant Coach _____ Lonnie Cooper
 Assistant Coach _____ J.A. Anglin
 Graduate Assistant _____ Luke Richard
 Team Manager _____ Gil Williams
 Athletic Trainer _____ Jeremy Teblum

Website _____ www.ulmwarhawks.com
 Facebook _____ www.facebook.com/warhawks
 Twitter _____ @ULM_MBB

Scouting the Ragin' Cajuns

The Ragin' Cajuns are off to a 4-2 start in conference play and 10-7 overall. They sit in second-place, one game behind the Warhawks. The Cajuns are coming off a pair of hard-fought losses, 78-70 at Georgia Southern and 89-82 vs. South Alabama. They opened league play on a four-game winning streak.

Junior Shawn Long leads the team in both scoring (16.0 ppg) and rebounding (9.8). On the season, he ranks first in the league in rebounding and blocks (1.8 bpg). Long won SBC Freshman of the Year in 2012-13.

Long is one of four Cajuns averaging in double-figures along with Brian Williams (12.5 ppg), Devonta Walker (11.4 ppg) and Kasey Shepherd (10.9 ppg). In conference games only, Jay Wright is also in double-digits with 10.4 points per outing.

As a team on the year, UL-L leads the SBC in points per game with 81.8. It's also tops in three-point field goal percentage (.361) and assists (15.4 apg).

Bob Marlin is in his fifth season as head coach. Last year, he brought the Cajuns to the NCAA Tournament after winning 23 games and the SBC Tournament. He coached Elfrid Payton to become the 10th pick of the 2014 NBA Draft. Marlin spent his first three seasons rebuilding the program and broke the barrier last year. He previously spent 12 seasons at Sam Houston State where he was named Southland Coach of the Decade (2000-10). Marlin was the winningest coach in SHSU history (225-131).

All-Time Series History vs. UL-Lafayette

UL-L leads, 46-23
 At ULM: UL-L leads, 18-15
 At UL-L: UL-L leads, 28-5
 On Neutral Courts: ULM leads, 2-1

ULM's Record by Starting Lineup

Coppola-Foster-Ongwae-Deng-Williams (5-0, 5-0 SBC)
 Coppola-Roberson-Ongwae-Samuel-Deng (1-0, 0-0 SBC)
 Coppola-Roberson-Ongwae-Deng-Harvey (3-1, 0-0 SBC)
 Coppola-Roberson-Ongwae-Deng-Williams (2-4, 0-0 SBC)
 Coppola-Amajoyi-Ongwae-Samuel-Harvey (0-1, 0-1 SBC)

Where ULM Ranks Nationally...

23rd in FG% defense (.373)
 24th in 3FG% defense (.283)
 43rd in blocks (5.0 bpg)

 Tylor Ongwae is 38th in FT%

2014-15 SBC Preseason

Poll (First-place votes in parenthesis)

- Georgia State 121 (11)
- UL-Lafayette 110
- UALR 94
- UT Arlington 75
- Arkansas State 73
- ULM 69**
- Texas State 43
- Troy 42
- Georgia Southern 38
- South Alabama 38
- Appalachian State 23

SUN BELT CONFERENCE PRESEASON TEAMS

Preseason First Team All-Conference

Jelani Hewitt (Georgia Southern, Senior, Guard)
 Ryan Harrow (Georgia State, Senior, Guard)
 R.J. Hunter (Georgia State, Junior, Guard)
 Shawn Long (UL Lafayette, Senior, Forward)
 Lonnie McClanahan (UT Arlington, Senior, Guard)

Preseason Second Team All-Conference

Josh Hagins (UALR, Junior, Guard)
 James White (UALR, Junior, Forward)
 Xavian Rimmer (UL Lafayette, Senior, Guard)
Tylor Ongwae (ULM, Senior, Forward)
 Emani Grant (Texas State, Junior, Forward)

Preseason Third Team All-Conference

Tab Hamilton (Appalachian State, Senior, Guard)
 Trent Wiedeman (Georgia Southern, Senior, Guard)
 Curtis Washington (Georgia State, Senior, Forward)
 Jamel Outler (UT Arlington, Senior, Guard)
 Kevin Thomas (Troy, Senior, Forward)

Preseason Player of the Year

R.J. Hunter (Georgia State, Junior, Guard)



SUN BELT
CONFERENCE



ULM Warhawks Men's Basketball

University of Louisiana at Monroe



2014-15 ULM MEN'S BASKETBALL

ULM Combined Team Statistics (as of Jan 17, 2015)

All games

Overall Stats

| RECORD: | OVERALL | HOME | AWAY | NEUTRAL |
|----------------|---------|------|------|---------|
| ALL GAMES | 11-6 | 8-0 | 3-4 | 0-2 |
| CONFERENCE | 5-1 | 3-0 | 2-1 | 0-0 |
| NON-CONFERENCE | 6-5 | 5-0 | 1-3 | 0-2 |

| # | Player | gp-gs | min | avg | Total | 3-Point | F-Throw | Rebounds | | pf | dq | a | to | blk | stl | pts | avg |
|----------------|------------------|-------|------|------|---------|---------|---------|----------|---------|-------|-----|-----|-----|------|-----|-----|-----|
| | | | | | fg-fga | fg% | 3fg-fga | 3fg% | ft-fa | ft% | off | def | tot | avg | | | |
| 12 | Ongwae, Tylor | 17-17 | 556 | 32.7 | 88-193 | .456 | 4-23 | .174 | 57-65 | .877 | 44 | 69 | 113 | 6.6 | 41 | 2 | 47 |
| 00 | Williams, Marvin | 16-11 | 338 | 21.1 | 59-99 | .596 | 1-3 | .333 | 27-41 | .659 | 29 | 46 | 75 | 4.7 | 39 | 1 | 6 |
| 13 | Deng, Majok | 17-16 | 453 | 26.6 | 53-119 | .445 | 16-49 | .327 | 32-45 | .711 | 31 | 93 | 124 | 7.3 | 32 | 0 | 22 |
| 11 | Coppola, Nick | 17-17 | 589 | 34.6 | 54-130 | .415 | 24-64 | .375 | 21-32 | .656 | 3 | 39 | 42 | 2.5 | 31 | 1 | 76 |
| 32 | Roberson, Justin | 17-11 | 427 | 25.1 | 61-137 | .445 | 5-21 | .238 | 25-33 | .758 | 5 | 52 | 57 | 3.4 | 43 | 4 | 34 |
| 05 | Samuel, Jamaal | 17-2 | 291 | 17.1 | 40-110 | .364 | 14-55 | .255 | 10-16 | .625 | 11 | 51 | 62 | 3.6 | 29 | 0 | 7 |
| 04 | Foster, Mack | 17-5 | 292 | 17.2 | 31-83 | .373 | 11-41 | .268 | 6-13 | .462 | 7 | 17 | 24 | 1.4 | 28 | 1 | 21 |
| 02 | Harvey, DeMondre | 17-5 | 269 | 15.8 | 27-46 | .587 | 0-0 | .000 | 9-18 | .500 | 24 | 35 | 59 | 3.5 | 20 | 0 | 9 |
| 22 | Richard, Lance | 12-0 | 45 | 3.8 | 7-22 | .318 | 6-21 | .286 | 0-0 | .000 | 0 | 4 | 4 | 0.3 | 4 | 0 | 0 |
| 03 | Cooper, Prince | 12-0 | 103 | 8.6 | 7-16 | .438 | 0-0 | .000 | 1-6 | .167 | 6 | 12 | 18 | 1.5 | 3 | 0 | 9 |
| 20 | Amajoyi, Chinedu | 10-1 | 87 | 8.7 | 4-16 | .250 | 0-6 | .000 | 2-2 | 1.000 | 1 | 7 | 8 | 0.8 | 7 | 0 | 10 |
| Team | | | | | | | | | | | 31 | 19 | 50 | | | | 4 |
| Total..... | | 17 | 3450 | | 431-971 | .444 | 81-283 | .286 | 190-271 | .701 | 192 | 444 | 636 | 37.4 | 277 | 9 | 241 |
| Opponents..... | | 17 | 3454 | | 364-975 | .373 | 89-314 | .283 | 215-293 | .734 | 199 | 390 | 589 | 34.6 | 261 | - | 193 |

| TEAM STATISTICS | ULM | OPP | Date | Opponent | Score | Att. |
|------------------------|---------|---------|------------|---------------------|-----------|-------|
| SCORING | 1133 | 1032 | 11/15/14 | at UAB | W 74-65 | 2403 |
| Points per game | 66.6 | 60.7 | 11/17/14 | CHAMPION BAPTIST | W 106-39 | 1078 |
| Scoring margin | +5.9 | - | 11/21/14 | at Florida | Lot 56-61 | 11003 |
| FIELD GOALS-ATT | 431-971 | 364-975 | 11/26/14 | vs Coastal Carolina | L 48-61 | 2426 |
| Field goal pct | .444 | .373 | 11/27/14 | vs Robert Morris | L 54-71 | 2136 |
| 3 POINT FG-ATT | 81-283 | 89-314 | 12/6/14 | LOUISIANA COLLEGE | W 83-55 | 1053 |
| 3-point FG pct | .286 | .283 | 12/09/14 | NORTHWESTERN STATE | W 82-74 | 1082 |
| 3-pt FG made per game | 4.8 | 5.2 | 12/13/14 | at New Mexico | L 46-54 | 13710 |
| FREE THROWS-ATT | 190-271 | 215-293 | 12/16/14 | CENTRAL BAPTIST | W 78-53 | 1060 |
| Free throw pct | .701 | .734 | 12/19/14 | LSUA | W 76-71 | 1201 |
| F-Throws made per game | 11.2 | 12.6 | 12/21/14 | at Samford | L 50-64 | 1053 |
| REBOUNDS | 636 | 589 | * 12/30/14 | at Georgia State | L 45-65 | 1371 |
| Rebounds per game | 37.4 | 34.6 | * 01/05/15 | ARKANSAS STATE | W 70-61 | 1418 |
| Rebounding margin | +2.8 | - | * 1/8/15 | at UTA | Wot 76-73 | 1074 |
| ASSISTS | 241 | 193 | * 1/10/15 | at Texas State | W 62-59 | 1612 |
| Assists per game | 14.2 | 11.4 | * 01/15/15 | TROY | W 63-54 | 1676 |
| TURNOVERS | 207 | 205 | * 01/17/15 | UALR | W 64-52 | 1793 |
| Turnovers per game | 12.2 | 12.1 | | | | |
| Turnover margin | -0.1 | - | | | | |
| Assist/turnover ratio | 1.2 | 0.9 | | | | |
| STEALS | 92 | 99 | | | | |
| Steals per game | 5.4 | 5.8 | | | | |
| BLOCKS | 85 | 54 | | | | |
| Blocks per game | 5.0 | 3.2 | | | | |
| ATTENDANCE | 10361 | 36788 | | | | |
| Home games-Avg/Game | 8-1295 | 7-4604 | | | | |
| Neutral site-Avg/Game | - | 2-2281 | | | | |

* = Conference game

On the Season in the SBC, ULM Ranks...

| | |
|-------------------------------------|---------------------------------------|
| First in FG% Defense: .373 | Ongwae second in FT%: .877 |
| First in 3FG% Defense: .283 | Deng second in blocks: 1.7 bpg |
| First in Blocks: 5.0 bpg | Coppola second in ast:turn ratio: 2.3 |
| Second in Scoring Defense: 60.7 ppg | Coppola third in assists: 4.5 apg |
| Second in Ast:Turn Ratio: 1.2 | Williams third in FG%: .596 |
| | Deng third in def. rebounds: 5.5 drpg |

| Score by Periods | 1st | 2nd | OT | Totals |
|------------------|-----|-----|----|--------|
| ULM | 524 | 595 | 14 | 1133 |
| Opponents | 438 | 578 | 16 | 1032 |



ULM Warhawks Men's Basketball

University of Louisiana at Monroe



2014-15 ULM MEN'S BASKETBALL

ULM Combined Team Statistics (as of Jan 17, 2015)

Conference games

Conference Stats

| RECORD: | OVERALL | HOME | AWAY | NEUTRAL |
|----------------|---------|------|------|---------|
| ALL GAMES | 5-1 | 3-0 | 2-1 | 0-0 |
| CONFERENCE | 5-1 | 3-0 | 2-1 | 0-0 |
| NON-CONFERENCE | 0-0 | 0-0 | 0-0 | 0-0 |

| # | Player | gp-gs | min | avg | Total | | 3-Point | | F-Throw | | Rebounds | | | | pf | dq | a | to | blk | stl | pts | avg |
|----------------|------------------|-------|------|------|---------|------|---------|------|---------|-------|----------|-----|-----|------|----|----|----|----|-----|-----|-----|------|
| | | | | | fg-fga | fg% | 3fg-fga | 3fg% | ft-fa | ft% | off | def | tot | avg | | | | | | | | |
| 00 | Williams, Marvin | 6-5 | 160 | 26.7 | 36-51 | .706 | 0-0 | .000 | 15-19 | .789 | 16 | 26 | 42 | 7.0 | 15 | 1 | 3 | 17 | 6 | 0 | 87 | 14.5 |
| 13 | Deng, Majok | 6-5 | 167 | 27.8 | 23-45 | .511 | 9-22 | .409 | 13-20 | .650 | 15 | 33 | 48 | 8.0 | 12 | 0 | 11 | 11 | 8 | 4 | 68 | 11.3 |
| 12 | Ongwae, Tylor | 6-6 | 197 | 32.8 | 21-57 | .368 | 1-10 | .100 | 19-20 | .950 | 14 | 26 | 40 | 6.7 | 13 | 1 | 14 | 8 | 5 | 5 | 62 | 10.3 |
| 32 | Roberson, Justin | 6-0 | 122 | 20.3 | 17-46 | .370 | 2-9 | .222 | 10-13 | .769 | 1 | 12 | 13 | 2.2 | 16 | 2 | 5 | 7 | 0 | 5 | 46 | 7.7 |
| 11 | Coppola, Nick | 6-6 | 218 | 36.3 | 13-39 | .333 | 5-20 | .250 | 5-9 | .556 | 0 | 18 | 18 | 3.0 | 8 | 0 | 27 | 15 | 0 | 5 | 36 | 6.0 |
| 04 | Foster, Mack | 6-5 | 132 | 22.0 | 11-37 | .297 | 5-23 | .217 | 4-7 | .571 | 1 | 10 | 11 | 1.8 | 11 | 1 | 6 | 4 | 1 | 2 | 31 | 5.2 |
| 05 | Samuel, Jamaal | 6-1 | 76 | 12.7 | 10-35 | .286 | 3-18 | .167 | 0-1 | .000 | 2 | 15 | 17 | 2.8 | 6 | 0 | 2 | 4 | 1 | 0 | 23 | 3.8 |
| 22 | Richard, Lance | 2-0 | 11 | 5.5 | 2-4 | .500 | 2-4 | .500 | 0-0 | .000 | 0 | 1 | 1 | 0.5 | 1 | 0 | 0 | 1 | 0 | 0 | 6 | 3.0 |
| 02 | Harvey, DeMondre | 6-1 | 79 | 13.2 | 5-10 | .500 | 0-0 | .000 | 1-5 | .200 | 4 | 7 | 11 | 1.8 | 8 | 0 | 5 | 2 | 1 | 2 | 11 | 1.8 |
| 03 | Cooper, Prince | 5-0 | 40 | 8.0 | 4-5 | .800 | 0-0 | .000 | 0-2 | .000 | 1 | 4 | 5 | 1.0 | 2 | 0 | 4 | 2 | 0 | 1 | 8 | 1.6 |
| 20 | Amajoyi, Chinedu | 2-1 | 23 | 11.5 | 0-1 | .000 | 0-1 | .000 | 2-2 | 1.000 | 0 | 0 | 0 | 0.0 | 0 | 0 | 1 | 1 | 0 | 1 | 2 | 1.0 |
| Team | | | | | | | | | | | 10 | 2 | 12 | | | | | | | | | |
| Total..... | | 6 | 1225 | | 142-330 | .430 | 27-107 | .252 | 69-98 | .704 | 64 | 154 | 218 | 36.3 | 92 | 5 | 78 | 72 | 22 | 25 | 380 | 63.3 |
| Opponents..... | | 6 | 1227 | | 126-329 | .383 | 29-101 | .287 | 83-112 | .741 | 58 | 143 | 201 | 33.5 | 93 | - | 67 | 64 | 13 | 36 | 364 | 60.7 |

| TEAM STATISTICS | ULM | OPP |
|------------------------|---------|---------|
| SCORING | 380 | 364 |
| Points per game | 63.3 | 60.7 |
| Scoring margin | +2.7 | - |
| FIELD GOALS-ATT | 142-330 | 126-329 |
| Field goal pct | .430 | .383 |
| 3 POINT FG-ATT | 27-107 | 29-101 |
| 3-point FG pct | .252 | .287 |
| 3-pt FG made per game | 4.5 | 4.8 |
| FREE THROWS-ATT | 69-98 | 83-112 |
| Free throw pct | .704 | .741 |
| F-Throws made per game | 11.5 | 13.8 |
| REBOUNDS | 218 | 201 |
| Rebounds per game | 36.3 | 33.5 |
| Rebounding margin | +2.8 | - |
| ASSISTS | 78 | 67 |
| Assists per game | 13.0 | 11.2 |
| TURNOVERS | 72 | 64 |
| Turnovers per game | 12.0 | 10.7 |
| Turnover margin | -1.3 | - |
| Assist/turnover ratio | 1.1 | 1.0 |
| STEALS | 25 | 36 |
| Steals per game | 4.2 | 6.0 |
| BLOCKS | 22 | 13 |
| Blocks per game | 3.7 | 2.2 |
| ATTENDANCE | 4887 | 4057 |
| Home games-Avg/Game | 3-1629 | 3-1352 |
| Neutral site-Avg/Game | - | 0-0 |

| Date | Opponent | Score | Att. |
|------------|------------------|-----------|------|
| * 12/30/14 | at Georgia State | L 45-65 | 1371 |
| * 01/05/15 | ARKANSAS STATE | W 70-61 | 1418 |
| * 1/8/15 | at UTA | Wot 76-73 | 1074 |
| * 1/10/15 | at Texas State | W 62-59 | 1612 |
| * 01/15/15 | TROY | W 63-54 | 1676 |
| * 01/17/15 | UALR | W 64-52 | 1793 |

* = Conference game

In SBC Games Only, ULM Ranks...

| | |
|------------------------------------|---------------------------------------|
| First in Scoring Defense: 60.7 ppg | Williams first in FG%: .706 |
| First in FG% Defense: .383 | Williams first in off. rebs: 2.7 orpg |
| First in def. reb%: .726 | Ongwae second in FT%: .950 |
| Second in 3FG% Defense: .287 | Coppola second in assists: 4.5 apg |
| Second in Blocks: 3.7 bpg | Deng third in rebounding: 8.0 rpg |
| | Deng third in off. rebs: 2.5 orpg |
| | Deng third in def. rebs: 5.5 drpg |

| Score by Periods | 1st | 2nd | OT | Totals |
|------------------|-----|-----|----|--------|
| ULM | 164 | 207 | 9 | 380 |
| Opponents | 140 | 218 | 6 | 364 |



ULM Warhawks Men's Basketball

University of Louisiana at Monroe



ULM - TEAM GAME HIGHS

| | | |
|-----------------------|--------------|--------------------------------|
| POINTS | 106 | CHAMPION BAPTIST (11/17/14) |
| | 83 | LOUISIANA COLLEGE (12/6/14) |
| | 82 | NORTHWESTERN STATE (12/09/14) |
| | 78 | CENTRAL BAPTIST (12/16/14) |
| | 76 | at UTA (1/8/15) |
| | 76 | LSUA (12/19/14) |
| FIELD GOALS MADE | 41 | CHAMPION BAPTIST (11/17/14) |
| | 35 | LOUISIANA COLLEGE (12/6/14) |
| FIELD GOAL ATTEMPTS | 70 | at UTA (1/8/15) |
| | 69 | CHAMPION BAPTIST (11/17/14) |
| FIELD GOAL PERCENTAGE | .594 (41-69) | CHAMPION BAPTIST (11/17/14) |
| | .574 (31-54) | NORTHWESTERN STATE (12/09/14) |
| 3 PT FIELD GOALS MADE | 9 | at UTA (1/8/15) |
| | 9 | at Florida (11/21/14) |
| | 9 | CHAMPION BAPTIST (11/17/14) |
| 3 PT FG ATTEMPTS | 31 | at UTA (1/8/15) |
| | 25 | vs Coastal Carolina (11/26/14) |
| | 25 | at Florida (11/21/14) |
| 3 PT FG PERCENTAGE | .600 (6-10) | at Samford (12/21/14) |
| | .375 (9-24) | CHAMPION BAPTIST (11/17/14) |
| | .375 (6-16) | at UAB (11/15/14) |
| | .375 (3-8) | NORTHWESTERN STATE (12/09/14) |
| FREE THROWS MADE | 19 | UALR (01/17/15) |
| | 17 | LSUA (12/19/14) |
| | 17 | NORTHWESTERN STATE (12/09/14) |
| FREE THROW ATTEMPTS | 30 | UALR (01/17/15) |
| | 24 | CHAMPION BAPTIST (11/17/14) |
| FREE THROW PERCENTAGE | .909 (10-11) | at Texas State (1/10/15) |
| | .889 (8-9) | TROY (01/15/15) |
| REBOUNDS | 48 | CHAMPION BAPTIST (11/17/14) |
| | 47 | at UTA (1/8/15) |
| | 47 | NORTHWESTERN STATE (12/09/14) |
| ASSISTS | 21 | LOUISIANA COLLEGE (12/6/14) |
| | 21 | CHAMPION BAPTIST (11/17/14) |
| STEALS | 14 | CHAMPION BAPTIST (11/17/14) |
| | 12 | LOUISIANA COLLEGE (12/6/14) |
| BLOCKED SHOTS | 10 | CHAMPION BAPTIST (11/17/14) |
| | 8 | NORTHWESTERN STATE (12/09/14) |
| TURNOVERS | 20 | LOUISIANA COLLEGE (12/6/14) |
| | 18 | at Texas State (1/10/15) |
| FOULS | 24 | at UTA (1/8/15) |

ULM Career Double-Doubles

Tylor Ongwae (5)

27 pts, 11 rebs vs. UL-L (1/4/14)
 27 pts, 10 rebs vs. Ga. State (1/25/14)
 16 pts, 11 rebs at UL-L (2/1/14)
 19 pts, 10 rebs vs. NSU (12/9/14)*
 15 pts, 10 rebs vs. Troy (1/15/15)*

Majok Deng (4)

14 pts, 10 rebs vs. C. Car (11/26/14)*
 14 pts, 11 rebs vs. La. Col (12/6/14)*
 11 pts, 11 rebs vs. Cen Bap (12/16/14)*
 14 pts, 15 rebs vs. UALR (1/17/15)*

Marvin Williams (3)

13 pts, 11 rebs at NSU (11/21/13)
 11 pts, 13 rebs at ASU (3/6/14)
 22 pts, 13 rebs at UTA (1/8/15)*

Nick Coppola (1)

12 pts, 12 asts vs. La. Col (12/6/14)*

DeMondre Harvey (1)

12 pts, 10 rebs, vs. NSU (12/9/14)*

* indicates this season



ULM Warhawks Men's Basketball

University of Louisiana at Monroe



SUN BELT CONFERENCE STANDINGS

As of 1/19/15

| School | SBC | Pct. | Overall | Pct. | Streak |
|------------------------|-----|------|---------|------|--------|
| 1. ULM | 5-1 | .833 | 11-6 | .647 | W5 |
| T-2. Georgia Southern | 4-2 | .667 | 11-4 | .733 | L1 |
| T-2. UL-Lafayette | 4-2 | .667 | 10-7 | .589 | L1 |
| T-4. Texas State | 4-3 | .571 | 10-6 | .625 | L1 |
| T-4. Georgia State | 4-3 | .571 | 11-7 | .611 | L1 |
| 6. UT Arlington | 3-3 | .500 | 9-7 | .563 | L1 |
| T-7. Arkansas State | 3-4 | .429 | 8-8 | .500 | W2 |
| T-7. South Alabama | 3-4 | .429 | 5-12 | .294 | W1 |
| T-9. Troy | 2-4 | .333 | 7-8 | .67 | W1 |
| T-9. Appalachian State | 2-4 | .333 | 5-10 | .333 | W1 |
| 11. UALR | 1-5 | .167 | 6-10 | .375 | L1 |

Saturday's Results

App State 74, Georgia State 69
 Troy 75, Georgia Southern 71
 ULM 64, UALR 52
 Arkansas State 78, Texas State 73 (OT)
 South Alabama 89, UL-Lafayette 82

Monday's Games

UALR at South Alabama, 7:05 PM
 Texas State at UT Arlington, 7:15 PM
 ULM at UL-Lafayette, 7:15 PM
 App State at Troy, 7:30 PM
 Georgia St. at Arkansas St., 7:30 PM

| Name | Career 10+ Points | Career 10+ Rebs | Career 10+ Asts |
|-----------------|-------------------------|-----------------|-----------------|
| Tylor Ongwae | 35 times (20+ 12 times) | 5 times | |
| Nick Coppola | 17 times | | 1 time |
| Marvin Williams | 16 times (20+ 2 times) | 3 times | |
| Jamaal Samuel | 4 times | | |
| Chinedu Amajoyi | 3 times | | |
| DeMondre Harvey | 2 times | 1 time | |
| Name | Season 10+ Points | Season 10+ Rebs | Season 10+ Asts |
| Tylor Ongwae | 11 times (20+ 3 times) | 2 times | |
| Majok Deng | 10 times | 4 times | |
| Nick Coppola | 8 times | | 1 time |
| Justin Roberson | 8 times | | |
| Marvin Williams | 6 times (20+ 2 times) | 1 time | |
| Jamaal Samuel | 3 times | | |
| Mack Foster | 2 times | | |
| DeMondre Harvey | 1 time | 1 time | |

Single-Game Categorical Highs 2014-15

| | |
|------------------|--|
| Points | Tylor Ongwae - 25, two times, vs. CEBC/LSUA |
| Field Goals Made | Tylor Ongwae - 10, vs. Central Baptist |
| 3FG Made | 3, seven times |
| Free Throws Made | Tylor Ongwae - 9, at Texas State |
| Rebounds | Majok Deng - 15, vs. UALR |
| Assists | Nick Coppola - 12, vs. Louisiana College |
| Steals | Mack Foster/Justin Roberson - 4, vs LC/at TXST |
| Blocks | Majok Deng/Jamaal Samuel - 4, at UAB/vs. C. Car. |
| Minutes | Nick Coppola - 45, at No. 8 Florida |

Number of times in 2014-15 a ULM student-athlete has led the team in...

| Player | Points | Rebs | Assists | FGM | FGA | FTM | FTA | 3FGM | 3FGA | Blocks | Steals | Mins |
|-----------------|--------|------|---------|-----|-----|-----|-----|------|------|--------|--------|------|
| Tylor Ongwae | 6 | 7 | 5 | 8 | 11 | 7 | 6 | 2 | 1 | 3 | 4 | 6 |
| Marvin Williams | 4 | 3 | | 4 | 3 | 4 | 6 | | | 6 | 1 | |
| Nick Coppola | 3 | | 11 | 2 | 1 | 1 | 1 | 9 | 8 | | 6 | 10 |
| Majok Deng | 2 | 8 | 2 | 2 | 2 | 3 | 4 | 6 | 4 | 10 | 4 | |
| Jamaal Samuel | 2 | 2 | | 1 | 2 | | | 3 | 4 | 2 | 4 | |
| Justin Roberson | 1 | 2 | 2 | 2 | 1 | 3 | 3 | | | | 7 | 1 |
| DeMondre Harvey | | 2 | 1 | | | | | | | 1 | 3 | |
| Mack Foster | | | 2 | | | | 1 | 4 | 2 | 1 | 4 | 1 |
| Lance Richard | | | | | | | | 1 | 2 | | | |
| Chinedu Amajoyi | | | 1 | | | | | | | | | |
| Prince Cooper | | | | | | | | | | | | 1 |

Note: If multiple student-athletes tie in a category in a single game, they all receive credit for leading the team



ULM Warhawks Men's Basketball

University of Louisiana at Monroe



In ULM's Last Outing...

ULM Shuts Down UALR 64-52 for Fifth Consecutive Victory. Remains Unbeaten at Home

MONROE, La. – A balanced scoring attack and tough defensive effort led the ULM men's basketball program to its fifth consecutive victory as it defeated UALR, 64-52 on Saturday to stay undefeated at Fant-Ewing Coliseum.

It marked the first time in school history that ULM (11-6, 5-1) has won five consecutive Sun Belt Conference games. The win also improved the program's home record to 8-0 on the year.

Junior Majok Deng anchored the Warhawks on both ends of the court as he scored 14 points and pulled down a career-high 15 rebounds. He hit a pair of three-pointers in the game and also dished out a couple assists.

Matching a season-high in scoring, sophomore Nick Coppola posted 15 points, five assists and a pair of steals. Senior Tylor Ongwae recorded 13 points and nine rebounds, senior Marvin Williams netted 10 points and junior Justin Roberson tallied 12 points off the bench.

UALR (6-10, 1-5 SBC) was led by Josh Hagin's 15 points and five rebounds.

ULM came out hot to begin the second half and quickly pushed the lead up to 38-22 which included a pair of buckets by Coppola. The Trojans came back with an 8-0 run to make it a 38-30 game with 12:37 remaining. The Warhawks matched it with an 8-0 run of their own which included three-point plays by Ongwae and Coppola to go back up 46-30 with 11:02 left.

The Trojans slowly clawed back into it and cut the deficit to single-digits late, 57-49, after a lay-up by Hagins with 1:22 remaining. A three-pointer by Hagins made it 59-52 at the 1:14 mark. UALR could not come any closer as ULM made free throws down the stretch to close it out.



Official Basketball Box Score -- Game Totals -- Final Statistics UALR vs ULM 01/17/15 4:30 PM CST at Fant-Ewing Coliseum; Monroe, Louisiana



UALR 52 • 6-10, 1-5

| # | Player | Total | | | 3-Ptr | | Rebounds | | | PF | TP | A | TO | Blk | Stl | Min |
|----|---------------------|--------|-----------------|--------|-------------|-------|----------|----|----|----|----|----|----|-----|-----|-----|
| | | FG-FGA | FG-FGA | FT-FTA | Off | Def | Tot | | | | | | | | | |
| 00 | Woods, Roger | - | 1-9 | 0-1 | 4-4 | 0 | 4 | 4 | 2 | 6 | 0 | 2 | 0 | 1 | 19 | |
| 11 | Smith, DeVonte | - | 1-3 | 0-2 | 0-0 | 0 | 2 | 2 | 4 | 2 | 1 | 1 | 0 | 0 | 18 | |
| 21 | Isom, Mareik | - | 1-5 | 1-3 | 2-2 | 0 | 2 | 2 | 5 | 5 | 1 | 2 | 0 | 0 | 20 | |
| 24 | Dillard, Ben | - | 1-3 | 0-1 | 0-0 | 0 | 1 | 1 | 0 | 2 | 3 | 1 | 0 | 0 | 26 | |
| 55 | Leeper, Gus | - | 3-9 | 0-0 | 2-4 | 2 | 3 | 5 | 2 | 8 | 1 | 1 | 2 | 1 | 38 | |
| 02 | Washington, Jerron | | 0-1 | 0-0 | 0-0 | 0 | 0 | 0 | 0 | 0 | 0 | 0 | 0 | 0 | 2 | |
| 03 | Hagins, Josh | | 5-12 | 1-4 | 4-6 | 3 | 2 | 5 | 3 | 15 | 1 | 4 | 0 | 1 | 27 | |
| 10 | Hill, Maurius | | 1-5 | 0-1 | 2-2 | 2 | 2 | 4 | 2 | 4 | 0 | 0 | 0 | 0 | 12 | |
| 14 | Thomas, J.T. | | 1-2 | 0-0 | 2-2 | 0 | 7 | 7 | 2 | 4 | 1 | 0 | 0 | 1 | 22 | |
| 22 | Reid, James | | 1-3 | 1-3 | 3-3 | 0 | 1 | 1 | 2 | 6 | 1 | 0 | 0 | 0 | 16 | |
| | Team | | | | | 1 | 1 | 2 | | | | | | | | |
| | Totals | | 15-52 | 3-15 | 19-23 | 8 | 25 | 33 | 22 | 52 | 9 | 11 | 2 | 4 | 200 | |
| | FG % 1st Half: 8-27 | 29.6% | 2nd half: 7-25 | 28.0% | Game: 15-52 | 28.8% | Deadball | | | | | | | | | |
| | 3FG % 1st Half: 1-8 | 12.5% | 2nd half: 2-7 | 28.6% | Game: 3-15 | 20.0% | Rebounds | | | | | | | | | |
| | FT % 1st Half: 2-2 | 100.0% | 2nd half: 17-21 | 81.0% | Game: 19-23 | 82.6% | 5 | | | | | | | | | |

ULM 64 • 11-6, 5-1

| # | Player | | Total | | 3-Ptr | | Rebounds | | | PF | TP | A | TO | Blk | Stl | Min |
|----|----------------------|-------|-----------------|--------|-------------|-------|----------|-----|----|----|----|----|----|-----|-----|-----|
| | | | FG-FGA | FG-FGA | FT-FTA | Off | Def | Tot | | | | | | | | |
| 00 | Williams, Marvin | * | 5-8 | 0-0 | 0-2 | 1 | 3 | 4 | 5 | 10 | 0 | 2 | 1 | 0 | 23 | |
| 04 | Foster, Mack | * | 0-4 | 0-2 | 0-2 | 0 | 0 | 0 | 2 | 0 | 0 | 1 | 0 | 1 | 18 | |
| 11 | Coppola, Nick | * | 6-11 | 1-4 | 2-2 | 0 | 2 | 2 | 0 | 15 | 5 | 2 | 0 | 2 | 40 | |
| 12 | Ongwae, Tylor | * | 4-11 | 0-2 | 5-5 | 3 | 6 | 9 | 3 | 13 | 3 | 1 | 1 | 0 | 40 | |
| 13 | Deng, Majok | * | 4-6 | 2-3 | 4-8 | 4 | 11 | 15 | 4 | 14 | 2 | 2 | 1 | 0 | 34 | |
| 02 | Harvey, DeMondre | | 0-0 | 0-0 | 0-2 | 0 | 0 | 0 | 2 | 0 | 0 | 0 | 0 | 0 | 14 | |
| 05 | Samuel, Jamaal | | 0-1 | 0-1 | 0-0 | 0 | 2 | 2 | 1 | 0 | 0 | 1 | 0 | 0 | 7 | |
| 32 | Roberson, Justin | | 2-6 | 0-3 | 8-9 | 0 | 3 | 3 | 1 | 12 | 1 | 3 | 0 | 0 | 24 | |
| | Team | | | | | | | | | | | | | | | |
| | Totals | | 21-47 | 3-15 | 19-30 | 8 | 28 | 36 | 18 | 64 | 11 | 12 | 3 | 3 | 200 | |
| | FG % 1st Half: 11-29 | 37.9% | 2nd half: 10-18 | 55.6% | Game: 21-47 | 44.7% | Deadball | | | | | | | | | |
| | 3FG % 1st Half: 1-11 | 9.1% | 2nd half: 2-4 | 50.0% | Game: 3-15 | 20.0% | Rebounds | | | | | | | | | |
| | FT % 1st Half: 5-7 | 71.4% | 2nd half: 14-23 | 60.9% | Game: 19-30 | 63.3% | 4 | | | | | | | | | |

Officials: R-Bruce Benedict, U1-John Heatley, U2- Kerby Sitten
Technical fouls: UALR-None. ULM-None.
Attendance: 1793

| Score by periods | 1st | 2nd | Total |
|------------------|-----|-----|-------|
| UALR | 19 | 33 | 52 |
| ULM | 28 | 36 | 64 |

Last FG - UALR 2nd-01:14, ULM 2nd-06:01.
Largest lead - UALR by 2 1st-19:27, ULM by 16 2nd-16:36.
UALR led for 01:51, ULM led for 36:04, Game was tied for 02:05.

Score tied - 1 time.
Lead changed - 1 time.

The Last Time ULM Played UL-L...

Warhawks Split Season Series with Ragin' Cajuns

LAFAYETTE, La. – Junior Tylor Ongwae registered his third double-double of the season, but it wasn't enough as the ULM men's basketball program fell 66-50 to UL-Lafayette on Saturday at the Cajundome.

Ongwae tallied 16 points and 11 rebounds to pace ULM (7-10, 4-5 SBC). Sophomore Kyle Koszuta put in nine points and junior Marvin Williams recorded eight points and six rebounds. Senior Jayon James passed for five assists.

UL-L (13-9, 4-5 SBC) was led by Elfrid Payton's 28 points on 13-of-14 shooting. Shawn Long had a double-double with 12 points and 12 rebounds, and Bryant Mbamalu had 14 points.

The Ragin' Cajuns held a slight 9-8 advantage early when the Warhawks went on a 5-0 run, which included a three-pointer by junior Chinedu Amajoyi, to go up 13-9 with 11:10 left in the first half. ULM extended its lead to 16-11 after a long-range shot by Coppola at the 9:25 mark.

Still up 16-12, senior R.J. McCray found himself open underneath and finished, and Williams hit a lay-up to make it a 20-12 game with 7:11 remaining. The Cajuns responded with a 14-1 run to take the lead at halftime, 24-21.

The Cajuns extended their lead to 32-25 early in the second half and were still up 34-27 when Koszuta drilled a three-pointer in the corner to make it a 34-30 game with 13:55 left. UL-L came back with a 6-0 run and forced ULM into calling its final timeout of the game at the 12:49 mark.

ULM found the hot hand in Koszuta as he hit two more long-range shots to make it a 40-36 game with 11:59 remaining. However, ULM could not get any closer.

Official Basketball Box Score -- Game Totals -- Final Statistics ULM vs ULL 02-01-14 7:45 p.m. at Lafayette, La. (Cajundome)

ULM 50 • 7-10, 4-5 SBC

| # | Player | | Total | | | 3-Ptr | | | Rebounds | | | PF | TP | A | TO | Blk | Stl | Min |
|---------------------|------------------|---|--------|-----------------|--------|-------------|--------|--------|----------|----------|-----|----|----|---|----|-----|-----|-----|
| | | | FG-FGA | FG-FGA | FT-FTA | FG-FGA | FG-FGA | FT-FTA | Off | Def | Tot | | | | | | | |
| 01 | James, Jayon | f | 0-5 | 0-0 | 0-2 | 0 | 4 | 4 | 1 | 0 | 5 | 1 | 2 | 0 | | | | 28 |
| 12 | Ongwae, Tylor | f | 6-17 | 0-3 | 4-4 | 4 | 7 | 11 | 1 | 16 | 1 | 2 | 0 | 1 | 1 | | | 36 |
| 00 | Williams, Marvin | c | 3-9 | 0-1 | 2-3 | 1 | 5 | 6 | 2 | 8 | 0 | 2 | 1 | 1 | 0 | | | 24 |
| 11 | Coppola, Nick | g | 3-8 | 1-2 | 0-0 | 1 | 0 | 1 | 3 | 7 | 1 | 3 | 0 | 1 | 1 | | | 37 |
| 13 | Amajoyi, Chinedu | q | 1-2 | 1-1 | 0-0 | 0 | 2 | 2 | 0 | 3 | 1 | 1 | 1 | 0 | 0 | | | 13 |
| 02 | Harvey, DeMondre | | 0-2 | 0-0 | 0-0 | 1 | 1 | 2 | 2 | 0 | 2 | 0 | 0 | 0 | 0 | | | 7 |
| 04 | McCray, RJ | | 1-3 | 0-1 | 0-0 | 0 | 1 | 1 | 0 | 2 | 1 | 0 | 0 | 0 | 0 | | | 11 |
| 15 | Koszuta, Kyle | | 3-6 | 3-5 | 0-0 | 0 | 0 | 0 | 2 | 9 | 1 | 0 | 0 | 1 | 1 | | | 19 |
| 20 | Sims, Evan | | 1-1 | 0-0 | 0-0 | 0 | 0 | 0 | 0 | 1 | 2 | 0 | 0 | 0 | 0 | | | 11 |
| 33 | Grieves, Daniel | | 1-1 | 1-1 | 0-0 | 0 | 0 | 0 | 3 | 3 | 0 | 0 | 0 | 0 | 0 | | | 14 |
| Team | | | | | | | | | | | | | | | | | | |
| Totals | | | | 19-54 | 6-14 | 6-9 | 10 | 21 | 31 | 15 | 50 | 12 | 9 | 4 | 4 | | | 200 |
| FG % 1st Half: 9-26 | | | 34.6% | 2nd half: 10-28 | 35.7% | Game: 19-54 | | | 35.2% | Deadball | | | | | | | | |
| 3FG % 1st Half: 2-5 | | | 40.0% | 2nd half: 4-9 | 44.4% | Game: 6-14 | | | 42.9% | Rebounds | | | | | | | | |
| FT % 1st Half: 1-2 | | | 50.0% | 2nd half: 5-7 | 71.4% | Game: 6-9 | | | 66.7% | 3 | | | | | | | | |

ULL 66 • 13-9, 4-5 SBC

| # | Player | Total | | | 3-Ptr | | | Rebounds | | | PF | TP | A | TO | Blk | Stl | Min |
|----------------------|-------------------|--------|-----------------|--------|-------------|-----|-------|----------|----|----|----|----|---|----|-----|-----|-----|
| | | FG-FGA | FG-FGA | FT-FTA | Off | Def | Tot | | | | | | | | | | |
| 22 | Moore, Elridge | f | 0-4 | 0-0 | 2-2 | 0 | 0 | 0 | 0 | 2 | 1 | 1 | 0 | 0 | 0 | 19 | |
| 44 | Davenport, JJ | c | 0-2 | 0-0 | 1-2 | 0 | 3 | 3 | 1 | 1 | 0 | 0 | 0 | 0 | 0 | 11 | |
| 00 | Mbamalu, Bryant | g | 5-8 | 2-4 | 2-3 | 0 | 4 | 4 | 1 | 14 | 2 | 2 | 0 | 2 | 3 | 35 | |
| 02 | Payton, Elfrid | g | 13-14 | 0-0 | 2-6 | 1 | 2 | 3 | 2 | 28 | 2 | 3 | 0 | 2 | 3 | 39 | |
| 03 | Rimmer, Xavian | g | 2-5 | 0-0 | 0-0 | 0 | 3 | 3 | 3 | 4 | 2 | 0 | 0 | 0 | 0 | 26 | |
| 11 | Williams, Donovan | | 0-1 | 0-1 | 0-0 | 0 | 1 | 1 | 1 | 0 | 1 | 0 | 0 | 1 | 1 | 3 | |
| 21 | Long, Shawn | | 5-14 | 0-1 | 2-2 | 5 | 7 | 12 | 2 | 12 | 2 | 0 | 4 | 1 | 1 | 34 | |
| 31 | Brown, Kevin | | 2-4 | 0-1 | 1-1 | 1 | 3 | 4 | 3 | 5 | 2 | 0 | 0 | 1 | 1 | 25 | |
| 33 | Kande, Vieux | | 0-1 | 0-0 | 0-0 | 0 | 0 | 0 | 0 | 0 | 0 | 0 | 0 | 0 | 0 | 8 | |
| Team | | | | | | | | | 2 | 2 | 4 | | | | | | |
| Totals | | | 27-53 | 2-7 | 10-16 | 9 | 25 | 34 | 13 | 66 | 12 | 6 | 4 | 7 | 2 | 200 | |
| FG % 1st Half: 11-27 | | 40.7% | 2nd half: 16-26 | 61.5% | Game: 27-53 | | 50.9% | Deadball | | | | | | | | | |
| 3FG % 1st Half: 0-3 | | 0.0% | 2nd half: 2-4 | 50.0% | Game: 2-7 | | 28.6% | Rebounds | | | | | | | | | |
| FT % 1st Half: 2-6 | | 33.3% | 2nd half: 8-10 | 80.0% | Game: 10-16 | | 62.5% | 2 | | | | | | | | | |



ULM Warhawks Men's Basketball

University of Louisiana at Monroe



The Last Time ULM...

Scored 100 or more points
 Scored 90 or more points
 Scored 80 or more points
 Scored fewer than 40 points
 Held an opponent to under 50 points
 Held an opponent to under 40 points
 Won by 30 or more points
 Won by 40 or more points
 Won by 50 or more points
 Won by 60 or more points
 Had four double-digit scorers
 Had five double-digit scorers
 Had no double-digit scorers
 Had 20 or more assists
 Had fewer than 10 assists
 Had 10 or more blocks
 Had 10 or more steals
 Had 25 or more turnovers
 Had fewer than 10 turnovers
 Made 30 or more field goals
 Made 40 or more field goals
 Made 50 or more field goals
 Shot over 60 pct from field
 Shot less than 20 pct from field
 Made 10 or more 3-pointers
 Made 15 or more 3-pointers
 Shot over 50 pct from 3FG
 Shot over 60 pct from 3FG
 Shot less than 20 pct from 3FG
 Made 20 or more free throws
 Made 30 or more free throws
 Shot 80-90 pct free throws
 Shot over 90 pct free throws
 Won on a buzzer beater
 Lost on a buzzer beater
 Won on the last possession
 Lost on the last possession
 Won in overtime
 Won in double overtime
 Won in triple overtime
 Had two double-doubles in one game
 Had two 20+ scorers in one game

106, vs. Champion Baptist (11/17/14)
 106, vs. Champion Baptist (11/17/14)
 82, vs. Northwestern State (12/9/14)
 36, vs. Texas State (1/11/2014)
 39, vs. Champion Baptist (11/17/14)
 39, vs. Champion Baptist (11/17/14)
 67, vs. Champion Baptist (11/17/14)
 67, vs. Champion Baptist (11/17/14)
 67, vs. Champion Baptist (11/17/14)
 67, vs. Champion Baptist (11/17/14)
 4, vs. Arkansas State (1/5/15)
 5, vs. UALR (1/17/15)
 at Georgia State (12/30/14)
 20, vs. Northwestern State (12/9/14)
 9, vs. Troy (1/15/15)
 10, vs. Champion Baptist (11/17/14)
 12, vs. Louisiana College (12/6/14)
 29, at Northwestern State (11/21/13)
 8, vs. Troy (1/15/15)
 30, vs. Central Baptist (12/16/14)
 41, vs. Champion Baptist (11/17/14)
 51, vs. Georgia Southern (2/8/79)
 .620 (31-50), at Nicholls State (11/28/11)
 .185 (10-54) at No. 3 Ohio State (12/27/13)
 10, at UT Arlington (1/9/14)
 15, vs. Middle Tennessee (1/24/08)
 .600 (6-10), at Samford (12/21/14)
 .643 (9-14), at Troy (1/16/14)
 .111 (1-9), vs. Arkansas State (1/5/15)
 24, vs. UL-Lafayette (1/4/14)
 30, vs. Troy (12/31/09)
 .889 (8-9), vs. Troy (1/15/15)
 .909 (10-11), at Texas State (1/10/15)
 W, 60-58, vs. SFA (Malcolm Thomas Jumper) (11/25/08)
 L, 76-73, at La. Tech (Kyle Gibson 3FG) (12/2/09)
 W, 66-65, at UALR (Pair of defensive stands) (3/10/14)
 L, 65-64, vs. SFA (Zac Downing 3FG, 4 secs) (11/23/10)
 W, 76-73, at UT Arlington (1/8/2015)
 W, 103-98 (2OT), vs. UL-Lafayette (1/4/2014)
 W, 107-106 (3OT), at La. Tech (1/5/1970)
 Tylor Ongwae & DeMondre Harvey, vs. Northwestern State (12/9/14)
 Tylor Ongwae (25) & Amos Olatayo (20), at UT Arlington (1/9/2014)

A ULM Player...

Had a double-double (pts-rbs)
 Had a double-double (pts-asts)
 Had a triple-double
 Had 20 points or more
 Had 30 points or more
 Had 40 points or more
 Had 50 points or more
 Made 10 or more field goals
 Made 15 or more field goals
 Made five or more 3FG
 Made 10 or more FT
 Had 10 or more rebounds
 Had 15 or more rebounds
 Had 20 or more rebounds
 Had 25 or more rebounds
 Had 30 or more rebounds
 Had 10 or more assists
 Had 15 or more assists
 Had five or more steals
 Had 10 or more steals
 Had five or more blocks
 Had 10 or more blocks
 Played 40 minutes or more

Majok Deng (14 pts, 15 rebs), vs. UALR (1/17/15)
 Nick Coppola (12 pts, 12 asts), vs. Louisiana College (12/6/14)
 Wojciech Mydra (11 pts, 10 rebs, 10 blks) vs. SHSU (1/24/02)
 Marvin Williams (22), vs. UT Arlington (1/8/15)
 Amos Olatayo (30), at Northwestern State (11/21/13)
 Henry Steele (40), vs. Louisiana College (1/23/71)
 Glynn Saulters (51), vs. Nicholls State (1/1/68)
 Tylor Ongwae (10), vs. Central Baptist (12/16/14)
 Mike Smith (15), vs. Houston (12/15/99)
 Trent Mackey (5), vs. North Texas (2/14/13)
 Chinedu Amajoyi (10-12), vs. Arkansas State (1/30/2014)
 Majok Deng (15), vs. UALR (1/17/15)
 Majok Deng (15), vs. UALR (1/17/15)
 DeAndre Alexander (20), vs. Lamar (3/2/05)
 Calvin Natt (25), vs. Miss. State (12/5/78)
 Calvin Natt (31) vs. Georgia Southern (12/29/76)
 Nick Coppola (12), vs. Louisiana College (12/6/14)
 Jayon James (15), at FIU (2/2/13)
 Tylor Ongwae (5), vs. UALR (2/15/14)
 Arthur Hayes (10), vs. McNeese State (1983)
 Jayon James (5), vs. UALR (2/15/14)
 Wojciech Mydra (13), vs. UTSA (3/2/02)
 Nick Coppola & Tylor Ongwae (40 each), vs. UALR (1/17/15)

MISCELLANEOUS STATS 2014-15

Largest halftime lead

35 (53-18), vs. Champion Baptist (11/17/14)

Largest halftime deficit

11 (37-26), vs. Robert Morris (11/27/14)

Largest halftime lead surrendered in a loss

3 (26-23), at Georgia State (12/30/14)

Largest halftime deficit overcome in a win

8 (28-20), at UT Arlington (1/8/15)

Largest lead any time

67 (106-39), vs. Champion Baptist (11/17/14)

Largest deficit any time

20, (65-45) at Georgia State (12/30/14)

Largest lead surrendered in a loss

12, at No. 8 Florida (11/21/14)

Largest deficit overcome in a win

13, at UT Arlington (1/8/15)

Most points scored in a half

53, vs. Champion Baptist (11/17/14)

Fewest points scored in a half

19, two times

Most points allowed in a half

44, two times (vs. NSU/LSUA)

Fewest points allowed in a half

18, first half vs. Champion Baptist (11/17/14)

Largest Rebounding Advantage

+27 (48-21), vs. Champion Baptist (11/17/14)

Largest Rebounding Disadvantage

-13 (49-36), at No. 8 Florida (11/21/14)

Highest Plus Turnover Differential

+13 (24-11), vs. Champion Baptist (11/17/14)

Highest Minus Turnover Differential

-11 (15-4), vs. NSU (12/9/14)

Most 3FG Made In a Game

9, three times

Most 3FG Allowed in a Game

10, vs. NSU (12/9/14)



ULM Warhawks Men's Basketball

University of Louisiana at Monroe



0 Marvin Williams

Senior | Center | 6-8 | 245
Memphis, Tenn. | NW Florida State College

| | Season-High | Career-High |
|--------|--------------------------|------------------------|
| Pts | 22, two times | 22, two times |
| FG | 9, two times | 9, two times |
| 3FG | 1, at Florida (11/22/14) | 1, two times |
| FT | 6, at UTA (1/8/15) | 6, at UTA (1/8/15) |
| Ast | 1, six times | 2, three times |
| Reb | 13, at UTA (1/8/15) | 13, two times |
| Blocks | 3, two times | 4, vs. UALR (2/15/14) |
| Steals | 2, vs. CHBC (11/17/14) | 2, vs. CHBC (11/17/14) |
| Min | 36, vs. RMU (11/27/14) | 36, vs. RMU (11/27/14) |



2 DeMondre Harvey

Junior | Forward | 6-7 | 210
Memphis, Tenn. | NW Florida State College

| | Season-High | Career-High |
|--------|------------------------|------------------------|
| Pts | 12, vs. NSU (12/9/14) | 12, vs. NSU (12/9/14) |
| FG | 6, vs. NSU (12/9/14) | 6, vs. NSU (12/9/14) |
| 3FG | N/A | N/A |
| FT | 5, vs. LSU (12/19/14) | 5, vs. LSU (12/19/14) |
| Ast | 3, vs. ASU (1/5/15) | 3, vs. ASU (1/5/15) |
| Reb | 10, vs. NSU (12/9/14) | 10, vs. NSU (12/9/14) |
| Blocks | 3, vs. CHBC (11/17/14) | 3, vs. CHBC (11/17/14) |
| Steals | 1, four times | 3, vs. ASU (3/1/14) |
| Min | 30, two times | 30, two times |

| Opp | GS | Min | FG-FGA/Pct. | 3FG-FGA | FT-FTA/PCT | O-D-T | PF-FO | A | TO | Blk | Stl | Pts/Avg |
|---------------|-----------|------------|-------------------|-----------------|-------------------|------------------|-------------|----------|-----------|-----------|----------|----------------|
| UAB | * | 16 | 1-5/.200 | 0-1/.000 | 1-1/1.000 | 0-0-0 | 3-0 | 0 | 0 | 0 | 1 | 3/3.0 |
| CH BAP | * | 18 | 3-3/1.000 | 0-0/.000 | 5-8/.625 | 1-3-4 | 2-0 | 1 | 1 | 0 | 2 | 11/7.0 |
| Florida | * | 27 | 3-11/.273 | 1-1/1.000 | 0-0/.000 | 3-1-4 | 2-0 | 0 | 1 | 2 | 0 | 7/7.0 |
| C. Car | * | 6 | 0-1/.000 | 0-1/.000 | 0-0/.000 | 0-2-2 | 4-0 | 0 | 2 | 0 | 0 | 0/5.3 |
| RMU | * | 36 | 6-11/.545 | 0-0/.000 | 2-5/.400 | 2-3-5 | 3-0 | 1 | 1 | 3 | 1 | 14/7.0 |
| La. Col | | 10 | 1-1/1.000 | 0-0/.000 | 0-0/.000 | 0-3-3 | 1-0 | 0 | 1 | 0 | 0 | 2/6.2 |
| NSU | | 9 | 1-1/1.000 | 0-0/.000 | 0-0/.000 | 0-2-2 | 2-0 | 0 | 2 | 1 | 0 | 2/5.6 |
| N.M. | * | 18 | 2-4/.500 | 0-0/.000 | 2-2/1.000 | 3-2-5 | 2-0 | 0 | 2 | 2 | 0 | 6/5.6 |
| CE BAP | | | | | DNP | | | | | | | |
| LSU-A | | 22 | 4-7/.571 | 0-0/.000 | 2-6/.333 | 2-2-4 | 1-0 | 0 | 0 | 2 | 0 | 10/6.1 |
| Samford | | 16 | 2-4/.500 | 0-0/.000 | 0-0/.000 | 2-2-4 | 4-0 | 1 | 1 | 0 | 0 | 4/5.9 |
| Ga. St. | | 17 | 1-3/.333 | 0-0/.000 | 5-6/.833 | 2-4-6 | 2-0 | 1 | 3 | 0 | 0 | 7/6.0 |
| Ark. St. | * | 33 | 9-12/.750 | 0-0/.000 | 4-5/.800 | 3-4-7 | 1-0 | 1 | 2 | 0 | 0 | 22/7.3 |
| UTA | * | 32 | 8-12/.667 | 0-0/.000 | 6-6/1.000 | 6-7-13 | 2-0 | 0 | 2 | 2 | 0 | 22/8.5 |
| TXST | * | 31 | 9-9/1.000 | 0-0/.000 | 0-0/.000 | 3-3-6 | 2-0 | 1 | 5 | 0 | 0 | 18/9.1 |
| Troy | * | 24 | 4-7/.571 | 0-0/.000 | 0-0/.000 | 1-5-6 | 3-0 | 0 | 3 | 3 | 0 | 8/9.1 |
| UALR | * | 23 | 5-8/.625 | 0-0/.000 | 0-2/.000 | 1-3-4 | 5-1 | 0 | 2 | 1 | 0 | 10/9.1 |
| UL-L | | | | | | | | | | | | |
| UTA | | | | | | | | | | | | |
| Ga. So. | | | | | | | | | | | | |
| Troy | | | | | | | | | | | | |
| USA | | | | | | | | | | | | |
| UALR | | | | | | | | | | | | |
| Ga. So. | | | | | | | | | | | | |
| UL-L | | | | | | | | | | | | |
| App. St. | | | | | | | | | | | | |
| Ark. St. | | | | | | | | | | | | |
| USA | | | | | | | | | | | | |
| App. St. | | | | | | | | | | | | |
| Ga. St. | | | | | | | | | | | | |
| TXST | | | | | | | | | | | | |
| TBA | | | | | | | | | | | | |
| Totals | 11 | 338 | 59-99/.596 | 1-3/.333 | 27-41/.659 | 29-46-.75 | 39-1 | 6 | 28 | 16 | 4 | 146/9.1 |

| Opp | GS | Min | FG-FGA/Pct. | 3FG-FGA | FT-FTA/PCT | O-D-T | PF-FO | A | TO | Blk | Stl | Pts/Avg |
|---------------|----------|------------|-------------------|-----------------|------------------|------------------|-------------|----------|-----------|----------|----------|---------------|
| UAB | | 22 | 2-7/.286 | 0-0/.000 | 1-2/.500 | 3-2-5 | 0-0 | 0 | 1 | 0 | 0 | 5/5.0 |
| CH BAP | | 21 | 2-3/.667 | 0-0/.000 | 2-3/.667 | 6-3-9 | 1-0 | 0 | 1 | 3 | 0 | 9/7.0 |
| Florida | | 6 | 0-0/.000 | 0-0/.000 | 0-0/.000 | 0-0-0 | 1-0 | 0 | 0 | 0 | 0 | 0/4.7 |
| C. Car | | 15 | 0-1/.000 | 0-0/.000 | 0-0/.000 | 1-0-1 | 1-0 | 0 | 0 | 0 | 0 | 0/3.5 |
| RMU | | 1 | 0-0/.000 | 0-0/.000 | 0-0/.000 | 0-0-0 | 0-0 | 0 | 0 | 0 | 0 | 0/2.2 |
| La. Col | * | 30 | 4-7/.571 | 0-0/.000 | 0-0/.000 | 2-7-9 | 1-0 | 2 | 3 | 1 | 1 | 8/3.2 |
| NSU | * | 30 | 6-6/1.000 | 0-0/.000 | 0-0/.000 | 1-9-10 | 1-0 | 1 | 2 | 2 | 0 | 12/4.4 |
| N.M. | | 10 | 0-0/.000 | 0-0/.000 | 0-0/.000 | 1-0-1 | 3-0 | 1 | 1 | 1 | 0 | 0/3.9 |
| CE BAP | | 25 | 4-7/.571 | 0-0/.000 | 0-0/.000 | 4-4-8 | 3-0 | 0 | 0 | 0 | 0 | 8/4.3 |
| LSU-A | * | 16 | 1-1/1.000 | 0-0/.000 | 5-5/1.000 | 0-2-2 | 0-0 | 0 | 1 | 0 | 1 | 7/4.6 |
| Samford | * | 14 | 3-4/.750 | 0-0/.000 | 0-3/.000 | 2-1-3 | 1-0 | 0 | 0 | 0 | 0 | 6/4.7 |
| Ga. St. | * | 20 | 1-4/.250 | 0-0/.000 | 1-2/.500 | 2-2-4 | 1-0 | 0 | 0 | 0 | 0 | 3/4.6 |
| Ark. St. | | 13 | 2-2/1.000 | 0-0/.000 | 0-1/.000 | 1-3-4 | 2-0 | 3 | 1 | 0 | 0 | 4/4.5 |
| UTA | | 7 | 1-2/.500 | 0-0/.000 | 0-0/.000 | 0-1-1 | 1-0 | 0 | 1 | 0 | 1 | 2/4.4 |
| TXST | | 9 | 0-1/.000 | 0-0/.000 | 0-0/.000 | 1-0-1 | 2-0 | 1 | 0 | 1 | 0 | 0/4.1 |
| Troy | | 16 | 1-1/1.000 | 0-0/.000 | 0-0/.000 | 0-1-1 | 0-0 | 1 | 0 | 0 | 1 | 2/3.9 |
| UALR | | 14 | 0-0/.000 | 0-0/.000 | 0-2/.000 | 0-0-0 | 2-0 | 0 | 0 | 0 | 0 | 0/3.7 |
| UL-L | | | | | | | | | | | | |
| UTA | | | | | | | | | | | | |
| Ga. So. | | | | | | | | | | | | |
| Troy | | | | | | | | | | | | |
| USA | | | | | | | | | | | | |
| UALR | | | | | | | | | | | | |
| Ga. So. | | | | | | | | | | | | |
| UL-L | | | | | | | | | | | | |
| App. St. | | | | | | | | | | | | |
| Ark. St. | | | | | | | | | | | | |
| USA | | | | | | | | | | | | |
| App. St. | | | | | | | | | | | | |
| Ga. St. | | | | | | | | | | | | |
| TXST | | | | | | | | | | | | |
| TBA | | | | | | | | | | | | |
| Totals | 5 | 269 | 27-46/.587 | 0-0/.000 | 9-18/.500 | 24-35-.59 | 20-0 | 9 | 11 | 8 | 4 | 63/3.7 |

2014-15 (SENIOR)

Won SBC and Co-LSWA Player of the Week on Jan. 12 after leading the team to a 3-0 record and going 26-33 (.798) FG with 20.7 ppg and 8.7 rpg... came up huge with 18 points on 9-9 shooting at Texas State... matched career-highs of 22 points and 13 rebounds in a big 76-73 overtime win over UTA and had eight of ULM's nine points in overtime and was a perfect 6-6 from the free throw line... dominating career-high performance of 22 points and nine made field goals in the win over Arkansas State and also grabbed seven rebounds... put in 10 points in a win over UALR at home... registered 14 points, six field goals made and 36 minutes in the Battle 4 Atlantis against Robert Morris... grabbed a season-high six rebounds at Georgia State... tallied 11 points on a perfect 3-for-3 from the field, grabbed four rebounds and set a career-high two steals in a win over Champion Baptist... scored 10 points with four rebounds and a pair of blocks in a victory over LSU-A

2013-14 (JUNIOR)

Tallied a pair of double-doubles with 13 points and 10 rebounds at Northwestern State and 11 points and 13 rebounds at Arkansas State... led the team with 23 blocks, finishing top-10 in the SBC... averaged 8.5 points and 4.8 rebounds per game... shot 48.6 percent from the field (89-183) which was top-15 in the league... grabbed 2.1 offensive rebounds per game in conference play, eighth-best in the league... posted nine double-figure scoring games on the season including a career-high 19 points at No. 5 Kansas to outscore Preseason Player of the Year Andrew Wiggins... the 13 rebounds against the Red Wolves were the most by a Warhawk in a single-game on the season... turned in 14 points and nine rebounds against UT Arlington at the SBC Championships... rejected a career-high four blocks at home against UALR

2014-15 (JUNIOR)

Posted a career performance against Northwestern State with a double-double and personal bests of 12 points and 10 rebounds in the win; matched his career-high with 30 minutes after getting the start... also earned the start and logged 30 minutes against Louisiana College; recorded eight points and nine rebounds in the contest... big outing with nine points, nine rebounds and three blocks in the win over Champion Baptist

2013-14 (SOPHOMORE)

Led the team in field goal percentage with a .531 mark (34-64)... registered a career-high 11 points on four made field goals against Thomas... grabbed a career-high eight rebounds at both Ole Miss and UALR... played a career-high 25 minutes at home against WKU... career-high three steals at home against Troy... recorded 13 blocks and 13 steals on the season... made four starts and played in all 27 contests... averaged 3.1 points and 3.4 rebounds per game... led the team in rebounding in four games and in blocks in six games

PREVIOUS SCHOOL

Played at Pearl River Junior College in Poplarville, Miss. and averaged 6.4 points and 5.8 rebounds per game... Played in all 25 games and made 15 starts... Registered three double-doubles including 14 points and 11 rebounds in the final game of the season on March 8... Tallied a career-high 15 points and four blocks against Holmes Community College on Nov. 5... Shot 60.0 percent from the field on the season and 60.6 percent from the free throw line... Will have three years of eligibility remaining at ULM



ULM Warhawks Men's Basketball

University of Louisiana at Monroe



3 Prince Cooper

Sophomore | Guard | 6-4 | 215
Freeport, Bahamas | Miami-Dade College

| | Season-High | Career-High |
|--------|-------------------------|-------------------------|
| Pts | 3, vs. CHBC (11/17/14) | 3, vs. CHBC (11/17/14) |
| FG | 1, seven times | 1, seven times |
| 3FG | N/A | N/A |
| FT | 1, vs. CHBC (11/17/14) | 1, vs. CHBC (11/17/14) |
| Ast | 3, vs. CHBC (11/17/14) | 3, vs. CHBC (11/17/14) |
| Reb | 5, vs. CHBC (11/17/14) | 5, vs. CHBC (11/17/14) |
| Blocks | 1, vs. CHBC (11/17/14) | 1, vs. CHBC (11/17/14) |
| Steals | 1, two times | 1, two times |
| Min | 24, vs. CHBC (11/17/14) | 24, vs. CHBC (11/17/14) |

| Opp | GS | Min | FG-FGA/Pct. | 3FG-FGA | FT-FTA/PCT | O-D-T | PF-FO | A | TO | Blk | Stl | Pts/Avg |
|----------|-----|-----------|-------------|----------|------------|-------|-------|---|----|-----|--------|---------|
| UAB | 5 | 0-1/.000 | 0-0/.000 | 0-0/.000 | 1-0-1 | 0-0 | 0 | 0 | 0 | 0 | 0 | 0/0.0 |
| CH BAP | 24 | 1-6/.167 | 0-0/.000 | 1-2/.500 | 2-3-5 | 1-0 | 3 | 2 | 1 | 1 | 3 | 3/1.5 |
| Florida | 6 | 1-2/.500 | 0-0/.000 | 0-0/.000 | 1-3-4 | 0-0 | 0 | 0 | 0 | 0 | 0 | 2/1.7 |
| C. Car | 12 | 1-1/1.000 | 0-0/.000 | 0-0/.000 | 0-2-2 | 0-0 | 1 | 1 | 0 | 0 | 0 | 2/1.8 |
| RMU | 8 | 0-0/.000 | 0-0/.000 | 0-0/.000 | 1-0-1 | 0-0 | 0 | 0 | 0 | 0 | 0 | 0/1.4 |
| La. Col | | | | DNP | | | | | | | | |
| NSU | | | | DNP | | | | | | | | |
| N.M. | 1 | 0-0/.000 | 0-0/.000 | 0-0/.000 | 0-0-0 | 0-0 | 0 | 0 | 0 | 0 | 0 | 0/1.2 |
| CE BAP | 7 | 0-1/.000 | 0-0/.000 | 0-2/.000 | 0-0-0 | 0-0 | 1 | 1 | 0 | 0 | 0 | 0/1.0 |
| LSU-A | | | | DNP | | | | | | | | |
| Samford | | | | DNP | | | | | | | | |
| Ga. St. | 18 | 1-2/.500 | 0-0/.000 | 0-2/.000 | 0-1-1 | 0-0 | 2 | 2 | 0 | 1 | 2 | 2/1.1 |
| Ark. St. | 4 | 1-1/1.000 | 0-0/.000 | 0-0/.000 | 1-0-1 | 0-0 | 0 | 0 | 0 | 0 | 0 | 2/1.2 |
| UTA | 8 | 1-1/1.000 | 0-0/.000 | 0-0/.000 | 0-1-1 | 2-0 | 0 | 0 | 0 | 0 | 0 | 2/1.3 |
| TXST | 5 | 1-1/1.000 | 0-0/.000 | 0-0/.000 | 0-2-2 | 0-0 | 1 | 0 | 0 | 0 | 0 | 2/1.4 |
| Troy | 5 | 0-0/.000 | 0-0/.000 | 0-0/.000 | 0-0-0 | 0-0 | 1 | 0 | 0 | 0 | 0 | 0/1.3 |
| UALR | | | | DNP | | | | | | | | |
| UL-L | | | | | | | | | | | | |
| UTA | | | | | | | | | | | | |
| Ga. So. | | | | | | | | | | | | |
| Troy | | | | | | | | | | | | |
| USA | | | | | | | | | | | | |
| UALR | | | | | | | | | | | | |
| Ga. So. | | | | | | | | | | | | |
| UL-L | | | | | | | | | | | | |
| App. St. | | | | | | | | | | | | |
| Ark. St. | | | | | | | | | | | | |
| USA | | | | | | | | | | | | |
| App. St. | | | | | | | | | | | | |
| Ga. St. | | | | | | | | | | | | |
| TXST | | | | | | | | | | | | |
| TBA | | | | | | | | | | | | |
| Totals | 103 | 7-16/.438 | 0-0/.000 | 1-6/.167 | 6-12-18 | 3-0 | 9 | 6 | 1 | 2 | 15/1.3 | |

2014-15 (SOPHOMORE)

Set nearly every career high in a win against Champion Baptist including five rebounds and three assists in 24 minutes... hit a mid-range jumpers in conference against Georgia State, Arkansas State, UT Arlington and Texas State

PREVIOUS SCHOOL

Played one season at Miami-Dade JC (Fla.)... averaged 10.4 points, 6.4 rebounds and 2.1 assists per game... shot an astounding 83 percent from the field... earned Dean's List honors for his achievements in the classroom

HIGH SCHOOL

Lettered in both basketball and track & field at Piney Woods HS (Miss.)... averaged 12 points, eight rebounds and three assists per game... named team captain as a senior... state champion in the triple jump (track & field)... earned academic honor roll and the highest chemistry and algebra II award... graduated top-15 in his class



4 Mack Foster

Junior | Guard | 6-2 | 185
Beulah, Miss. | East Mississippi CC

| | Season-High | Career-High |
|--------|-------------------------|-------------------------|
| Pts | 13, vs. CHBC (11/17/14) | 13, vs. CHBC (11/17/14) |
| FG | 5, vs. CHBC (11/17/14) | 5, vs. CHBC (11/17/14) |
| 3FG | 3, two times | 3, two times |
| FT | 2, two times | 2, two times |
| Ast | 3, two times | 3, two times |
| Reb | 4, at UTA (1/8/15) | 4, at UTA (1/8/15) |
| Blocks | 1, three times | 1, three times |
| Steals | 4, vs. LC (12/6/14) | 4, vs. LC (12/6/14) |
| Min | 29, at TXST (1/10/15) | 29, at TXST (1/10/15) |

| Opp | GS | Min | FG-FGA/Pct. | 3FG-FGA | FT-FTA/PCT | O-D-T | PF-FO | A | TO | Blk | Stl | Pts/Avg |
|----------|----|----------|-------------|------------|------------|---------|-------|----|----|-----|-----|---------|
| UAB | 7 | 0-2/.000 | 0-2/.000 | 0-0/.000 | 0-0-0 | 1-0 | 0 | 0 | 1 | 0 | 0 | 0/0.0 |
| CH BAP | 24 | 5-9/.556 | 3-6/.500 | 0-0/.000 | 1-1-2 | 2-0 | 3 | 1 | 1 | 3 | | 13/7.5 |
| Florida | 18 | 1-4/.250 | 1-2/.500 | 0-0/.000 | 0-0-0 | 4-0 | 2 | 0 | 0 | 3 | | 3/5.3 |
| C. Car | 11 | 3-4/.750 | 0-1/.000 | 0-2/.000 | 2-0-2 | 0-0 | 1 | 0 | 0 | 0 | 0 | 6/5.5 |
| RMU | 14 | 3-4/.750 | 0-1/.000 | 0-2/.000 | 1-0-1 | 1-0 | 3 | 0 | 0 | 0 | 0 | 6/5.6 |
| La. Col | 18 | 3-5/.600 | 0-0/.000 | 2-2/1.000 | 0-1-1 | 2-0 | 2 | 0 | 0 | 4 | | 8/6.0 |
| NSU | 14 | 1-6/.167 | 0-1/.000 | 0-0/.000 | 0-0-0 | 1-0 | 1 | 1 | 0 | 0 | 0 | 2/5.4 |
| N.M. | 18 | 2-4/.500 | 1-2/.500 | 0-0/.000 | 2-1-3 | 0-0 | 1 | 1 | 0 | 0 | 0 | 5/5.4 |
| CE BAP | 11 | 0-3/.000 | 0-1/.000 | 0-0/.000 | 0-3-3 | 2-0 | 0 | 1 | 0 | 0 | 0 | 0/4.8 |
| LSU-A | 12 | 2-3/.667 | 1-1/1.000 | 0-0/.000 | 0-0-0 | 2-0 | 1 | 1 | 0 | 0 | 0 | 5/4.8 |
| Samford | 13 | 0-2/.000 | 0-1/.000 | 0-0/.000 | 0-1-1 | 2-0 | 1 | 0 | 1 | 0 | 0 | 0/4.5 |
| Ga. St. | 14 | 2-5/.400 | 1-3/.333 | 2-2/1.000 | 0-1-1 | 0-0 | 1 | 0 | 0 | 0 | 0 | 7/4.6 |
| Ark. St. | * | 22 | 2-5/.400 | 0-2/.000 | 0-0/.000 | 0-2-2 | 1-0 | 0 | 1 | 0 | 1 | 4/4.5 |
| UTA | * | 28 | 4-9/.444 | 3-8/.375 | 0-1/.000 | 0-4-4 | 5-1 | 2 | 1 | 0 | 0 | 11/5.0 |
| TXST | * | 29 | 1-7/.143 | 1-6/.167 | 0-0/.000 | 0-1-1 | 2-0 | 1 | 1 | 0 | 0 | 3/4.9 |
| Troy | * | 21 | 2-7/.286 | 0-2/.000 | 2-2/1.000 | 1-2-3 | 1-0 | 2 | 0 | 1 | 0 | 6/4.9 |
| UALR | * | 18 | 0-4/.000 | 0-2/.000 | 0-2/.000 | 0-0-0 | 2-0 | 0 | 1 | 0 | 1 | 0/4.6 |
| UL-L | | | | | | | | | | | | |
| UTA | | | | | | | | | | | | |
| Ga. So. | | | | | | | | | | | | |
| Troy | | | | | | | | | | | | |
| USA | | | | | | | | | | | | |
| UALR | | | | | | | | | | | | |
| Ga. So. | | | | | | | | | | | | |
| UL-L | | | | | | | | | | | | |
| App. St. | | | | | | | | | | | | |
| Ark. St. | | | | | | | | | | | | |
| USA | | | | | | | | | | | | |
| App. St. | | | | | | | | | | | | |
| Ga. St. | | | | | | | | | | | | |
| TXST | | | | | | | | | | | | |
| TBA | | | | | | | | | | | | |
| Totals | 5 | 292 | 31-83/.373 | 11-41/.268 | 6-13/.462 | 7-17-24 | 28-1 | 21 | 9 | 4 | 12 | 79/4.6 |

2014-15 (JUNIOR)

Earned five consecutive starts including at UT Arlington where he netted 11 points after a trio of three-pointers... ULM is 5-0 with him starting... became the first Warhawk to register four steals in a game on the season in the win over Louisiana College... shot 3-for-4 from the field in both games of the Battle 4 Atlantis Mainland bracket against Coastal Carolina and Robert Morris... registered a career-high 13 points and hit a trio of three-pointers in 24 minutes in a win over Champion Baptist

PREVIOUS SCHOOL

Played two seasons at East Mississippi CC and led the team to the Region 23 championship... guided the team to a No. 11 ranking in the NJCAA National Poll... averaged 7.1 points, 4.0 rebounds and 1.0 steals per game... hit a career-high six three-pointers in a game

HIGH SCHOOL

Lettered in both basketball and track & field at West Bolivar HS... named Co-MVP All-State and Best Offensive Player... earned All-Area MVP, First-Team and Best Defensive Player... guided the Eagles to the state championship... averaged 15 points, six rebounds, three steals and two blocks per game... dunked on Johnny O'Bryant III, who was drafted by the Milwaukee Bucks, his freshman year off a put-back



ULM Warhawks Men's Basketball

University of Louisiana at Monroe



5 Jamaal Samuel

Junior | Forward | 6-9 | 205
New Orleans, La. | Illinois State

| | Season-High | Career-High |
|--------|-------------------------------|--------------------------|
| Pts | 18, vs. CHBC (11/17/14) | 18, vs. CHBC (11/17/14) |
| FG | 7, vs. CHBC (11/17/14) | 7, vs. CHBC (11/17/14) |
| 3FG | 3, vs. CHBC (11/17/14) | 3, vs. CHBC (11/17/14) |
| FT | 4, vs. NSU (12/9/14) | 4, vs. NSU (12/9/14) |
| Ast | 2, two times | 2, three times |
| Reb | 7, vs. NSU (12/9/14) | 8, vs. Bradley (2/15/14) |
| Blocks | 4, vs. C. Carolina (11/26/14) | 4, two times |
| Steals | 2, two times | 2, two times |
| Min | 27, at UNM (12/13/14) | 27, at UNM (12/13/14) |

| Opp | GS | Min | FG-FGA/Pct. | 3FG-FGA | FT-FTA/PCT | O-D-T | PF-FO | A | TO | Blk | Stl | Pts/Avg |
|----------|----|-----|-------------|------------|------------|-----------|-------|---|----|-----|-----|---------|
| UAB | | 17 | 1-4/.250 | 1-3/.333 | 0-0/.000 | 0-2-2 | 3-0 | 2 | 2 | 0 | 1 | 3/3.0 |
| CH BAP | | 20 | 7-12/.583 | 3-6/.500 | 1-2/.500 | 1-5-6 | 1-0 | 0 | 2 | 2 | 0 | 18/10.5 |
| Florida | | 22 | 3-10/.300 | 3-10/.300 | 0-0/.000 | 1-5-6 | 3-0 | 0 | 1 | 0 | 1 | 9/10.0 |
| C. Car | | 23 | 1-4/.250 | 1-4/.250 | 0-0/.000 | 0-2-2 | 2-0 | 1 | 1 | 4 | 1 | 3/8.3 |
| RMU | | 14 | 1-5/.200 | 1-4/.250 | 1-2/.500 | 0-5-5 | 2-0 | 1 | 4 | 0 | 1 | 4/7.4 |
| La. Col | | 11 | 1-6/.167 | 0-1/.000 | 0-0/.000 | 2-0-2 | 2-0 | 0 | 0 | 1 | 0 | 2/6.5 |
| NSU | | 14 | 4-8/.500 | 0-0/.000 | 4-5/.800 | 3-4-7 | 3-0 | 0 | 0 | 3 | 0 | 12/7.3 |
| N.M. | | 27 | 2-7/.286 | 0-4/.000 | 2-2/1.000 | 0-2-2 | 0-0 | 0 | 0 | 0 | 2 | 6/7.1 |
| CE BAP | * | 21 | 1-5/.200 | 0-1/.000 | 1-2/.500 | 0-2-2 | 2-0 | 0 | 2 | 2 | 2 | 3/6.7 |
| LSU-A | | 21 | 4-6/.667 | 0-2/.000 | 0-0/.000 | 2-3-5 | 1-0 | 1 | 2 | 1 | 0 | 8/6.8 |
| Samford | | 25 | 5-8/.625 | 2-2/1.000 | 1-2/.500 | 0-6-6 | 4-0 | 0 | 1 | 1 | 0 | 13/7.4 |
| Ga. St. | * | 26 | 4-12/.333 | 1-4/.250 | 0-1/.000 | 0-5-5 | 0-0 | 2 | 1 | 0 | 0 | 9/7.5 |
| Ark. St. | | 13 | 2-7/.286 | 1-4/.250 | 0-0/.000 | 0-0-0 | 0-0 | 0 | 0 | 1 | 0 | 5/7.3 |
| UTA | | 12 | 1-8/.125 | 1-5/.200 | 0-0/.000 | 0-4-4 | 0-0 | 0 | 0 | 0 | 0 | 3/7.0 |
| TXST | | 6 | 1-3/.333 | 0-2/.000 | 0-0/.000 | 0-1-1 | 2-0 | 0 | 1 | 0 | 0 | 2/6.7 |
| Troy | | 12 | 2-4/.500 | 0-2/.000 | 0-0/.000 | 2-3-5 | 3-0 | 0 | 1 | 0 | 0 | 4/6.5 |
| UALR | | 7 | 0-1/.000 | 0-1/.000 | 0-0/.000 | 0-2-2 | 1-0 | 0 | 1 | 0 | 0 | 0/6.1 |
| UL-L | | | | | | | | | | | | |
| UTA | | | | | | | | | | | | |
| Ga. So. | | | | | | | | | | | | |
| Troy | | | | | | | | | | | | |
| USA | | | | | | | | | | | | |
| UALR | | | | | | | | | | | | |
| Ga. So. | | | | | | | | | | | | |
| UL-L | | | | | | | | | | | | |
| App. St. | | | | | | | | | | | | |
| Ark. St. | | | | | | | | | | | | |
| USA | | | | | | | | | | | | |
| App. St. | | | | | | | | | | | | |
| Ga. St. | | | | | | | | | | | | |
| TXST | | | | | | | | | | | | |
| TBA | | | | | | | | | | | | |
| Totals | 2 | 291 | 40-110/.364 | 14-55/.255 | 10-16/.625 | 11-51-.62 | 29-0 | 7 | 19 | 15 | 8 | 104/6.1 |

2014-15 (JUNIOR)

Netted 13 points including a pair of three-pointers and pulled down six rebounds against Samford... registered 12 points and grabbed a season-high seven rebounds in the win over NSU... set career highs in points (18), field goals made (7) and three-pointers made (3) in a win over Champion Baptist... earned the start against Central Baptist and had a pair of blocks and steals... led the team with nine points at Georgia State

2013-14 (SOPHOMORE) ILLINOIS STATE

Played in 26 games with one start... ranked second on the team and No. 5 in the Missouri Valley Conference with 0.9 blocks per game... netted four points with four rebounds and three blocks in the loss at Southern Illinois (March 1)... grabbed a career-best eight rebounds and scored four points in the win over Bradley (Feb. 15)... blocked a career-best four shots and collected six rebounds in the overtime loss at Evansville (Feb. 12)... netted nine points on 3-for-4 shooting in the loss at Loyola (Feb. 9)... scored a career-high 10 points on a career-best five field goals (5-for-5) in the win over Northern Iowa (Feb. 5)... made his first-career start and scored four points during a career-high 24 minutes in the win over Drake (Feb. 1)... registered the first two blocks of his career in the win over Chicago State (Dec. 4)... scored nine points on 4-for-6 shooting with five rebounds in the loss at No. 14 VCU (Nov. 8)

2012-13 (FRESHMAN) PRIOR TO ILLINOIS STATE

Helped guide South Plains College to a 22-8 overall record and an 11-5 mark in the Western Junior College Athletic Conference (WJAC) as a freshman in 2012-13... shot 46.7 percent from the field



11 Nick Coppola

Sophomore | Guard | 5-11 | 195
Richmond, Va. | Benedictine Prep

| | Season-High | Career-High |
|--------|---------------------------|---------------------------|
| Pts | Two times | 16, at GSU (2/20/14) |
| FG | 6, three times | 6, four times |
| 3FG | 3, three times | 4, at GSU (2/20/14) |
| FT | 4, at UNM (12/13/14) | 5, at KU (11/8/13) |
| Ast | 12, vs. LC (12/6/14) | 12, vs. LC (12/6/14) |
| Reb | 5, vs. NSU (12/9/14) | 6, vs. WKU (1/23/14) |
| Blocks | N/A | N/A |
| Steals | 3, vs. LC (12/6/14) | 3, vs. LC (12/6/14) |
| Min | 45, at Florida (11/21/14) | 45, at Florida (11/21/14) |

| Opp | GS | Min | FG-FGA/Pct. | 3FG-FGA | FT-FTA/PCT | O-D-T | PF-FO | A | TO | Blk | Stl | Pts/Avg |
|----------|----|-----|-------------|------------|------------|----------|-------|----|----|-----|-----|---------|
| UAB | * | 33 | 5-8/.625 | 3-5/.600 | 1-2/.500 | 0-4-4 | 0-0 | 6 | 2 | 0 | 1 | 14/14.0 |
| CH BAP | * | 12 | 2-2/1.000 | 1-1/1.000 | 2-4/.500 | 0-2-2 | 1-0 | 4 | 0 | 0 | 1 | 7/10.5 |
| Florida | * | 45 | 3-10/.300 | 3-5/.600 | 2-2/1.000 | 0-1-1 | 3-0 | 2 | 1 | 0 | 1 | 11/10.7 |
| C. Car | * | 37 | 2-9/.222 | 1-5/.200 | 0-0/.000 | 0-1-1 | 2-0 | 7 | 0 | 0 | 0 | 5/9.3 |
| RMU | * | 39 | 2-8/.250 | 2-6/.333 | 0-0/.000 | 1-2-3 | 2-0 | 2 | 2 | 0 | 1 | 6/8.6 |
| La. Col | * | 31 | 6-9/.667 | 0-2/.000 | 0-2/.000 | 0-0-0 | 1-0 | 12 | 4 | 0 | 3 | 12/9.2 |
| NSU | * | 40 | 4-9/.444 | 2-5/.400 | 3-4/.750 | 1-4-5 | 3-0 | 6 | 2 | 0 | 2 | 13/9.7 |
| N.M. | * | 29 | 2-8/.250 | 1-4/.250 | 4-4/1.000 | 0-2-2 | 5-1 | 0 | 1 | 0 | 0 | 9/9.6 |
| CE BAP | * | 28 | 4-5/.800 | 2-3/.667 | 2-2/1.000 | 0-1-1 | 3-0 | 2 | 2 | 0 | 2 | 12/9.9 |
| LSU-A | * | 40 | 5-11/.455 | 1-4/.250 | 2-3/.667 | 0-3-3 | 1-0 | 6 | 1 | 0 | 0 | 13/10.2 |
| Samford | * | 37 | 6-12/.500 | 3-4/.750 | 0-0/.000 | 1-1-2 | 2-0 | 2 | 3 | 0 | 0 | 15/10.6 |
| Ga. St. | * | 29 | 2-4/.500 | 2-3/.667 | 0-0/.000 | 0-4-4 | 1-0 | 4 | 1 | 0 | 2 | 6/10.3 |
| Ark. St. | * | 40 | 1-5/.200 | 0-1/.000 | 1-2/.500 | 0-4-4 | 2-0 | 6 | 1 | 0 | 0 | 3/9.7 |
| UTA | * | 42 | 2-9/.222 | 0-5/.000 | 2-5/.400 | 0-2-2 | 2-0 | 7 | 3 | 0 | 1 | 6/9.4 |
| TXST | * | 34 | 1-5/.200 | 1-3/.333 | 0-0/.000 | 0-4-4 | 2-0 | 4 | 5 | 0 | 0 | 3/9.0 |
| Troy | * | 33 | 1-5/.200 | 1-4/.250 | 0-0/.000 | 0-2-2 | 1-0 | 2 | 3 | 0 | 0 | 3/8.6 |
| UALR | * | 40 | 6-11/.545 | 1-4/.250 | 2-2/1.000 | 0-2-2 | 0-0 | 5 | 2 | 0 | 2 | 15/9.0 |
| UL-L | | | | | | | | | | | | |
| UTA | | | | | | | | | | | | |
| Ga. So. | | | | | | | | | | | | |
| Troy | | | | | | | | | | | | |
| USA | | | | | | | | | | | | |
| UALR | | | | | | | | | | | | |
| Ga. So. | | | | | | | | | | | | |
| UL-L | | | | | | | | | | | | |
| App. St. | | | | | | | | | | | | |
| Ark. St. | | | | | | | | | | | | |
| USA | | | | | | | | | | | | |
| App. St. | | | | | | | | | | | | |
| Ga. St. | | | | | | | | | | | | |
| TXST | | | | | | | | | | | | |
| TBA | | | | | | | | | | | | |
| Totals | 17 | 589 | 54-130/.415 | 24-64/.375 | 21-32/.656 | 3-39-.42 | 31-1 | 76 | 33 | 0 | 16 | 153/9.0 |

2013-14 College Sports Madness SBC Freshman of the Year

2014-15 (SOPHOMORE)

Has started at point guard in every game of his career... matched a season-high and led the team with 15 points against UALR at home... set his season-high with 15 points at Samford... recorded 13 points vs. LSU... tallied career-highs of 12 assists and three steals against Louisiana College and also had a double-double with 12 points... posted 12 points on four-for-five shooting against Central Baptist... registered 13 points in 40 minutes against NSU... dished out seven assists against Coastal Carolina at the Battle 4 Atlantis... netted 11 points on a trio of three-pointers, including one in the final seconds of regulation to send the game to overtime against No. 8 Florida, and played a career-high 45 minutes... registered 14 points, including a trio of three-pointers in the second half, to go along with his six assists in a win at UAB... led the team with nine points at New Mexico

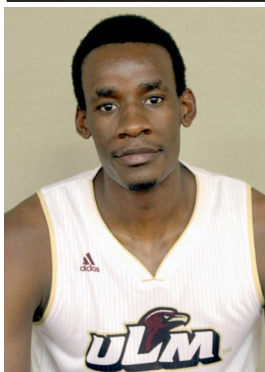
2013-14 (FRESHMAN)

One of two players to start all 27 games for the Warhawks... led the team in minutes with 33.3 per game... played 40 minutes nine times and tied the school record of five in a row set in 1999-2000 by Maurice Bell... in conference play, ranked third in the league in minutes (36.1 mpg), seventh in three-point field goal percentage (.407) and top-10 in assists (2.9 apg)... tallied nine double-figure scoring games including a career-high 16 points at Georgia State where he hit four three-pointers... drained a career-high six field goals at UALR in the regular season finale and scored 15 points... dished out a career-high eight assists in an overtime victory at Northwestern State... pulled down a career-high six rebounds at home versus WKU... scored 10 points in the season opener at No. 5 Kansas... led the team in minutes in 12 games and assists in 10 games... averaged 6.9 points and 3.3 assists per game on the year



ULM Warhawks Men's Basketball

University of Louisiana at Monroe



12 Tylor Ongwae

Senior | Forward | 6-7 | 205
Eldoret, Kenya | Ranger College

| | Season-High | Career-High |
|--------|------------------------|-----------------------|
| Pts | 25, vs. two times | 27, two times |
| FG | 10, two times | 11, vs. ULL (1/4/14) |
| 3FG | 1, four times | 4, at UTA (1/9/14) |
| FT | 9, at TXST (1/10/15) | 9, three times |
| Ast | 9, vs. NSU (12/9/14) | 9, vs. NSU (12/9/14) |
| Reb | 10, vs. NSU (12/9/14) | 11, two times |
| Blocks | 2, two times | 3, vs. ULL (1/4/14) |
| Steals | 2, two times | 5, vs. UALR (2/15/14) |
| Min | 40, vs. UALR (1/17/15) | 46, vs. ULL (1/4/14) |



13 Major Deng

Junior | Forward | 6-10 | 190
Adelaide, Australia | Indian Hills CC

| | Season-High | Career-High |
|--------|------------------------|------------------------|
| Pts | 16, vs. Troy (1/15/15) | 16, vs. Troy (1/15/15) |
| FG | 6, at UTA (1/8/15) | 6, at UTA (1/8/15) |
| 3FG | 3, at UTA (1/8/15) | 3, at UTA (1/8/15) |
| FT | 6, vs. Troy (1/15/15) | 6, vs. Troy (1/15/15) |
| Ast | 2, nine times | 2, nine times |
| Reb | 15, vs. UALR (1/17/15) | 15, vs. UALR (1/17/15) |
| Blocks | 4, at UAB (11/15/14) | 4, at UAB (11/15/14) |
| Steals | 2, three times | 2, three times |
| Min | 35, two times | 35, two times |

| Opp | GS | Min | FG-FGA/Pct. | 3FG-FGA | FT-FTA/PCT | O-D-T | PF-FO | A | TO | Blk | Stl | Pts/Avg |
|---------------|-----------|------------|--------------------|------------------|-------------------|------------------|-------------|-----------|-----------|----------|-----------|-----------------|
| UAB | * | 34 | 8-17/.471 | 0-0/.000 | 2-2/1.000 | 3-6-9 | 5-1 | 2 | 3 | 0 | 1 | 18/18.0 |
| CH BAP | * | 12 | 8-10/.800 | 0-0/.000 | 0-0/.000 | 4-1-5 | 0-0 | 0 | 0 | 1 | 2 | 16/17.0 |
| Florida | * | 39 | 8-14/.585 | 0-1/.000 | 3-6/.625 | 3-5-8 | 4-0 | 3 | 3 | 2 | 0 | 19/17.7 |
| C. Car | * | 28 | 3-10/.300 | 0-3/.000 | 1-1/1.000 | 0-4-4 | 1-0 | 2 | 3 | 0 | 0 | 7/15.0 |
| RMU | * | 32 | 2-6/.333 | 0-0/.000 | 3-3/1.000 | 3-1-4 | 3-0 | 1 | 2 | 1 | 1 | 7/13.4 |
| La. Col | * | 30 | 9-15/.600 | 0-0/.000 | 4-5/.800 | 6-3-9 | 2-0 | 1 | 3 | 0 | 1 | 22/14.8 |
| NSU | * | 39 | 6-8/.750 | 0-0/.000 | 7-8/.875 | 2-8-10 | 3-0 | 9 | 4 | 0 | 0 | 19/15.4 |
| N.M. | * | 30 | 2-11/.182 | 1-3/.333 | 3-4/.750 | 2-5-7 | 3-0 | 1 | 2 | 0 | 0 | 8/14.5 |
| CE BAP | * | 38 | 10-16/.625 | 1-3/.333 | 4-4/1.000 | 2-3-5 | 2-0 | 6 | 1 | 0 | 1 | 25/15.7 |
| LSU-A | * | 38 | 9-15/.600 | 1-2/.500 | 6-6/1.000 | 2-4-6 | 3-0 | 4 | 2 | 0 | 1 | 25/16.6 |
| Samford | * | 39 | 2-14/.143 | 0-1/.000 | 5-6/.833 | 3-3-6 | 2-0 | 4 | 2 | 0 | 0 | 9/15.9 |
| Ga. St. | * | 22 | 0-7/.000 | 0-2/.000 | 0-0/.000 | 0-0-0 | 3-0 | 2 | 1 | 0 | 1 | 0/14.6 |
| Ark. St. | * | 36 | 4-7/.571 | 0-0/.000 | 2-2/1.000 | 1-6-7 | 0-0 | 1 | 3 | 2 | 1 | 10/14.2 |
| UTA | * | 29 | 2-7/.286 | 0-1/.000 | 3-3/1.000 | 2-4-6 | 5-1 | 5 | 1 | 0 | 1 | 7/13.7 |
| TXST | * | 35 | 4-10/.400 | 0-0/.000 | 9-9/1.000 | 3-5-8 | 1-0 | 2 | 1 | 1 | 2 | 17/13.9 |
| Troy | * | 35 | 7-15/.467 | 1-5/.200 | 0-1/.000 | 5-5-10 | 1-0 | 1 | 1 | 1 | 0 | 15/14.0 |
| UALR | * | 40 | 4-11/.364 | 0-2/.000 | 5-5/1.000 | 3-6-9 | 3-0 | 3 | 1 | 1 | 0 | 13/13.9 |
| UL-L | | | | | | | | | | | | |
| UTA | | | | | | | | | | | | |
| Ga. So. | | | | | | | | | | | | |
| Troy | | | | | | | | | | | | |
| USA | | | | | | | | | | | | |
| UALR | | | | | | | | | | | | |
| Ga. So. | | | | | | | | | | | | |
| UL-L | | | | | | | | | | | | |
| App. St. | | | | | | | | | | | | |
| Ark. St. | | | | | | | | | | | | |
| USA | | | | | | | | | | | | |
| App. St. | | | | | | | | | | | | |
| Ga. St. | | | | | | | | | | | | |
| TXST | | | | | | | | | | | | |
| TBA | | | | | | | | | | | | |
| Totals | 17 | 556 | 88-193/.456 | 4-23/.174 | 57-65/.877 | 44-69-113 | 41-2 | 47 | 33 | 9 | 12 | 236/13.9 |

| Opp | GS | Min | FG-FGA/Pct. | 3FG-FGA | FT-FTA/PCT | O-D-T | PF-FO | A | TO | Blk | Stl | Pts/Avg |
|---------------|-----------|------------|--------------------|-------------------|-------------------|------------------|-------------|-----------|-----------|-----------|-----------|----------------|
| UAB | * | 25 | 5-9/.556 | 2-4/.500 | 1-2/.500 | 1-4-5 | 1-0 | 2 | 0 | 4 | 2 | 13/13.0 |
| CH BAP | * | 20 | 2-4/.500 | 0-2/.000 | 3-3/1.000 | 0-6-6 | 2-0 | 2 | 2 | 2 | 1 | 7/10.0 |
| Florida | * | 35 | 1-7/.143 | 1-5/.200 | 0-0/.000 | 1-8-9 | 2-0 | 1 | 1 | 0 | 0 | 3/7.7 |
| C. Car | * | 35 | 5-10/.500 | 2-6/.333 | 2-2/1.000 | 1-9-10 | 2-0 | 0 | 0 | 3 | 0 | 14/9.3 |
| RMU | * | 19 | 0-4/.000 | 0-2/.000 | 2-2/1.000 | 1-0-1 | 3-0 | 0 | 2 | 0 | 0 | 2/7.8 |
| La. Col | * | 29 | 5-9/.556 | 1-2/.500 | 3-6/.500 | 2-9-11 | 2-0 | 2 | 2 | 2 | 1 | 14/8.8 |
| NSU | * | 26 | 5-10/.500 | 1-1/1.000 | 3-4/.750 | 3-4-7 | 1-0 | 1 | 1 | 2 | 0 | 14/9.6 |
| N.M. | * | 26 | 3-8/.375 | 0-4/.000 | 0-0/.000 | 2-4-6 | 4-0 | 1 | 0 | 1 | 2 | 6/9.1 |
| CE BAP | * | 34 | 3-7/.429 | 0-0/.000 | 5-6/.833 | 4-7-11 | 2-0 | 2 | 3 | 3 | 1 | 11/9.3 |
| LSU-A | * | 21 | 1-2/.500 | 0-0/.000 | 0-0/.000 | 1-6-7 | 0-0 | 0 | 1 | 3 | 0 | 2/8.6 |
| Samford | * | 16 | 0-4/.000 | 0-1/.000 | 0-0/.000 | 0-3-3 | 1-0 | 0 | 0 | 1 | 0 | 0/7.8 |
| Ga. St. | * | 17 | 3-9/.333 | 0-2/.000 | 0-1/.000 | 4-4-8 | 1-0 | 1 | 1 | 1 | 0 | 6/7.7 |
| Ark. St. | * | 20 | 4-7/.571 | 0-2/.000 | 2-3/.667 | 1-5-6 | 4-0 | 2 | 3 | 0 | 1 | 10/7.8 |
| UTA | * | 34 | 6-9/.667 | 3-6/.500 | 0-0/.000 | 3-2-5 | 1-0 | 2 | 3 | 2 | 0 | 15/8.4 |
| TXST | * | 34 | 2-4/.500 | 2-4/.500 | 1-2/.500 | 2-6-8 | 2-0 | 2 | 2 | 3 | 2 | 7/8.3 |
| Troy | * | 28 | 4-10/.400 | 2-5/.400 | 6-6/1.000 | 1-5-6 | 0-0 | 2 | 0 | 1 | 1 | 16/8.8 |
| UALR | * | 34 | 4-6/.667 | 2-3/.667 | 4-8/.500 | 4-11-15 | 4-0 | 2 | 2 | 1 | 0 | 14/9.1 |
| UL-L | | | | | | | | | | | | |
| UTA | | | | | | | | | | | | |
| Ga. So. | | | | | | | | | | | | |
| Troy | | | | | | | | | | | | |
| USA | | | | | | | | | | | | |
| UALR | | | | | | | | | | | | |
| Ga. So. | | | | | | | | | | | | |
| UL-L | | | | | | | | | | | | |
| App. St. | | | | | | | | | | | | |
| Ark. St. | | | | | | | | | | | | |
| USA | | | | | | | | | | | | |
| App. St. | | | | | | | | | | | | |
| Ga. St. | | | | | | | | | | | | |
| TXST | | | | | | | | | | | | |
| TBA | | | | | | | | | | | | |
| Totals | 16 | 453 | 53-119/.445 | 16-49/.327 | 32-45/.711 | 31-93-124 | 32-0 | 22 | 23 | 29 | 11 | 154/9.1 |

2013-14 All-Conference Third-Team | 2013-14 NABC All-District Second-Team
2013-14 All-Louisiana Third-Team | 2013-14 College Sports Madness SBC Fourth-Team
2014-15 (SENIOR)

Recorded 13 points and nine rebounds in 40 minutes vs. UALR at home... registered a double-double with 15 points and 10 rebs vs. Troy... scored 17 points on a perfect 9-9 FTs at Texas State... season-high 25 points vs. Central Baptist and also had six assists and five rebounds... matched his season-high with 25 points against LSU-A... tallied a double-double with 19 points and 10 rebounds vs. NSU and neared a triple-double with a career-high nine assists... neared a double-double with 22 points and nine rebounds vs. Louisiana College... poured in 19 points and grabbed eight rebounds in an overtime thriller against No. 8 Florida and head coach Billy Donovan said he was the best player on the court... won SBC Player of the Week, College Sports Madness SBC Player of the Week and Warhawk of the Week on Nov. 18, 2014... drained 16 points in just 12 minutes on 8-for-10 shooting against Champion Baptist and grabbed five rebounds... netted 18 points in a victory over UAB and neared a double-double with nine rebounds

2013-14 (JUNIOR)

Became just the second ULM student-athlete in school history to earn All-Conference honors from the Sun Belt since joining the league in 2006-0... finished fourth in the league in scoring with 17.5 points per game and reached double-figures in 17 of 18 SBC contests... recorded double-digits in 24 of 27 games on the season and played at least 40 minutes three times... registered at least 20 points nine times... posted three double-doubles, with a career-high 27 points against both UL-L and Georgia State at home... led the team in scoring in 17 games... notched a career-high five steals at home vs. UALR, the most by a Warhawk in a single game on the season... played a career-high 46 minutes in the overtime win over UL-L and made a career-high 11 FG's... etched a team-high 20 points against UTA at the SBC Championships... one of two players to start all 27 games on the season... second on the team in rebounds (5.8 rpg), three-pointers made (27), blocks (19) and steals (30)... named to the NABC Honors Court for outstanding achievement in the classroom

JUNIOR (2014-15)

Grabbed a career-high 15 points to go along with his 14 points and a double-double against UALR at home... netted career-highs of 16 points and six free throws (6-6) vs. Troy... tallied 15 points on 6-9 shooting including a trio of three-pointers in an overtime win over UT Arlington... posted a double-double with 11 points and 11 rebounds in the win over Central Baptist... recorded 14 points, seven rebounds and two blocks and hit a big three-pointer in the end to defeat Northwestern State... tallied a double-double with 14 points and 11 rebounds in the win over Louisiana College... registered a double-double with 14 points and 10 rebounds against Coastal Carolina in the Battle 4 Atlantis... poured in 13 points, including a pair of three-pointers, in a win over UAB and also blocked four shots

PREVIOUS SCHOOL

Led Indian Hills Community College to the 2014 Regional and District Championships... guided the program to a 34-3 record in 2014 and a combined 60-7 record in his two years... hit a three-pointer against Southeastern for the win in double overtime in 2013... netted a career-high 16 points against John Wood CC



ULM Warhawks Men's Basketball

University of Louisiana at Monroe



20 Chinedu Amajoyi

Senior Guard | 6-3 | 195
Rancho Cucamonga, Calif. | Kilgore College

| | Season-High | Career-High |
|--------|------------------------|------------------------|
| Pts | 8, vs. CHBC (11/17/14) | 12, vs. USA (2/27/14) |
| FG | 4, vs. CHBC (11/17/14) | 4, vs. USA (2/27/14) |
| 3FG | N/A | 3, two times |
| FT | 2, at GSU (12/30/14) | 10, vs. ASU (1/30/14) |
| Ast | 6, vs. CHBC (11/17/14) | 6, vs. CHBC (11/17/14) |
| Reb | 4, at UAB (11/15/14) | 8, two times |
| Blocks | N/A | 1, two times |
| Steals | 1, at GSU (12/30/14) | 2, two times |
| Min | 19, two times | 36, at ASU (3/6/14) |

| Opp | GS | Min | FG-FGA/Pct. | 3FG-FGA | FT-FTA/PCT | O-D-T | PF-FO | A | TO | Blk | Stl | Pts/Avg |
|---------------|----------|-----------|------------------|-----------------|------------------|--------------|------------|-----------|----------|----------|----------|---------------|
| UAB | 8 | 0-3/.000 | 0-1/.000 | 0-0/.000 | 1-3-4 | 1-0 | 1 | 2 | 0 | 0 | 0 | 0/0.0 |
| CH BAP | 19 | 4-7/.571 | 0-2/.000 | 0-0/.000 | 0-2-2 | 3-0 | 6 | 0 | 0 | 0 | 0 | 8/4.0 |
| Florida | | | | | DNP | | | | | | | |
| C. Car | 3 | 0-0/.000 | 0-0/.000 | 0-0/.000 | 0-0-0 | 0-0 | 0 | 1 | 0 | 0 | 0 | 0/2.7 |
| RMU | 1 | 0-0/.000 | 0-0/.000 | 0-0/.000 | 0-0-0 | 0-0 | 0 | 0 | 0 | 0 | 0 | 0/2.0 |
| La. Col | 10 | 0-1/.000 | 0-1/.000 | 0-0/.000 | 0-0-0 | 1-0 | 1 | 2 | 0 | 0 | 0 | 0/1.6 |
| NSU | | | | | DNP | | | | | | | |
| N.M. | 8 | 0-1/.000 | 0-0/.000 | 0-0/.000 | 0-1-1 | 0-0 | 1 | 1 | 0 | 0 | 0 | 0/1.3 |
| CE BAP | 2 | 0-2/.000 | 0-1/.000 | 0-0/.000 | 0-0-0 | 1-0 | 0 | 0 | 0 | 0 | 0 | 0/1.1 |
| LSU-A | | | | | DNP | | | | | | | |
| Samford | 13 | 0-1/.000 | 0-0/.000 | 0-0/.000 | 0-1-1 | 1-0 | 0 | 0 | 0 | 0 | 0 | 0/1.0 |
| Ga. St. | 19 | 0-0/.000 | 0-0/.000 | 0-0/.000 | 2-2/1.000 | 0-0-0 | 0-0 | 1 | 1 | 0 | 1 | 2/1.1 |
| Ark. St. | | | | | DNP | | | | | | | |
| UTA | 4 | 0-1/.000 | 0-1/.000 | 0-0/.000 | 0-0-0 | 0-0 | 0 | 0 | 0 | 0 | 0 | 0/1.0 |
| TXST | | | | | DNP | | | | | | | |
| Troy | | | | | DNP | | | | | | | |
| UALR | | | | | DNP | | | | | | | |
| UL-L | | | | | | | | | | | | |
| UTA | | | | | | | | | | | | |
| Ga. So. | | | | | | | | | | | | |
| Troy | | | | | | | | | | | | |
| USA | | | | | | | | | | | | |
| UALR | | | | | | | | | | | | |
| Ga. So. | | | | | | | | | | | | |
| UL-L | | | | | | | | | | | | |
| App. St. | | | | | | | | | | | | |
| Ark. St. | | | | | | | | | | | | |
| USA | | | | | | | | | | | | |
| App. St. | | | | | | | | | | | | |
| Ga. St. | | | | | | | | | | | | |
| TXST | | | | | | | | | | | | |
| TBA | | | | | | | | | | | | |
| Totals | 1 | 87 | 4-16/.250 | 0-6/.000 | 2-2/1.000 | 1-7-8 | 7-0 | 10 | 8 | 0 | 1 | 10/1.0 |

2014-15 (SENIOR)

Scored eight points in 19 minutes in a win over Champion Baptist

2013-14 (JUNIOR)

Finished top-10 in the league in three-point field goal percentage at .405 (15-37)... started in 11 of ULM's last 12 games and doubled his scoring average in that span... posted career-highs of 12 points and eight rebounds against South Alabama at home... became the only ULM student-athlete to hit 10 free throws in a game on the season as he went 10-12 at home against Arkansas State... registered three double-figure scoring games... played a career-high 36 minutes at Arkansas State and pulled down eight rebounds... drained a trio of three-pointers at both Texas State and Georgia State... averaged 4.1 points per game and made 22 appearances

PREVIOUS SCHOOL

Played two seasons at Kilgore College and led the Rangers to a 27-6 overall record and an East Texas JUCO Conference Championship ... Also guided Kilgore to the quarterfinals of the 2013 National Junior College Athletic Association National Tournament and started every game ... Averaged 5.9 points, 2.7 rebounds and 1.9 assists in 33 appearances ... Tallied five double-figure scoring games including a career-high 17 points on two separate occasions ... Shot .807 percent from the free-throw line

HIGH SCHOOL

An All-Conference honoree at Los Osos High School ... Averaged 15 points and seven rebounds per game while shooting .857 from the free throw line ... 1,000 point scorer in his career



22 Lance Richard

R-Freshman | Guard | 5-10 | 175
Monroe, La. | Sterlington HS

| | Season-High | Career-High |
|--------|-------------------------|-------------------------|
| Pts | 8, vs. CHBC (11/17/14) | 8, vs. CHBC (11/17/14) |
| FG | 3, vs. CHBC (11/17/14) | 3, vs. CHBC (11/17/14) |
| 3FG | 2, vs. CHBC (11/17/14) | 2, vs. CHBC (11/17/14) |
| FT | N/A | N/A |
| Ast | N/A | N/A |
| Reb | 3, vs. CHBC (11/17/14) | 3, vs. CHBC (11/17/14) |
| Blocks | 1, vs. RMU (11/17/14) | 1, vs. RMU (11/17/14) |
| Steals | 1, two times | 1, two times |
| Min | 15, vs. CHBC (11/17/14) | 15, vs. CHBC (11/17/14) |

| Opp | GS | Min | FG-FGA/Pct. | 3FG-FGA | FT-FTA/PCT | O-D-T | PF-FO | A | TO | Blk | Stl | Pts/Avg |
|----------|----|-----------|-------------|----------|------------|-------|-------|---|----|-----|--------|---------|
| UAB | 1 | 0-0/.000 | 0-0/.000 | 0-0/.000 | 0-0-0 | 0-0 | 0 | 0 | 0 | 0 | 0 | 0/0.0 |
| CH BAP | 15 | 3-8/.375 | 2-7/.286 | 0-0/.000 | 0-3-3 | 1-0 | 0 | 1 | 0 | 1 | 0 | 8/4.0 |
| Florida | 1 | 0-0/.000 | 0-0/.000 | 0-0/.000 | 0-0-0 | 0-0 | 0 | 0 | 0 | 0 | 0 | 0/2.7 |
| C. Car | 1 | 0-2/.000 | 0-2/.000 | 0-0/.000 | 0-0-0 | 0-0 | 0 | 0 | 0 | 0 | 0 | 0/2.0 |
| RMU | 5 | 1-2/.500 | 1-2/.500 | 0-0/.000 | 0-0-0 | 2-0 | 0 | 0 | 1 | 0 | 0 | 3/2.2 |
| La. Col | 5 | 1-3/.333 | 1-3/.333 | 0-0/.000 | 0-0-0 | 0-0 | 0 | 0 | 0 | 0 | 0 | 3/2.3 |
| NSU | | | | | DNP | | | | | | | |
| N.M. | 1 | 0-1/.000 | 0-1/.000 | 0-0/.000 | 0-0-0 | 0-0 | 0 | 0 | 0 | 0 | 0 | 0/2.0 |
| CE BAP | 3 | 0-1/.000 | 0-1/.000 | 0-0/.000 | 0-0-0 | 0-0 | 0 | 0 | 0 | 0 | 1 | 0/1.8 |
| LSU-A | 0+ | 0-1/.000 | 0-1/.000 | 0-0/.000 | 0-0-0 | 0-0 | 0 | 0 | 0 | 0 | 0 | 0/1.6 |
| Samford | 2 | 0-0/.000 | 0-0/.000 | 0-0/.000 | 0-0-0 | 0-0 | 0 | 0 | 0 | 0 | 0 | 0/1.4 |
| Ga. St. | 5 | 1-2/.500 | 1-2/.500 | 0-0/.000 | 0-0-0 | 0-0 | 0 | 1 | 0 | 0 | 0 | 3/1.5 |
| Ark. St. | | | | | DNP | | | | | | | |
| UTA | 6 | 1-2/.500 | 1-2/.500 | 0-0/.000 | 0-1-1 | 1-0 | 0 | 0 | 0 | 0 | 0 | 3/1.7 |
| TXST | | | | | DNP | | | | | | | |
| Troy | | | | | DNP | | | | | | | |
| UALR | | | | | DNP | | | | | | | |
| UL-L | | | | | | | | | | | | |
| UTA | | | | | | | | | | | | |
| Ga. So. | | | | | | | | | | | | |
| Troy | | | | | | | | | | | | |
| USA | | | | | | | | | | | | |
| UALR | | | | | | | | | | | | |
| Ga. So. | | | | | | | | | | | | |
| UL-L | | | | | | | | | | | | |
| App. St. | | | | | | | | | | | | |
| Ark. St. | | | | | | | | | | | | |
| USA | | | | | | | | | | | | |
| App. St. | | | | | | | | | | | | |
| Ga. St. | | | | | | | | | | | | |
| TXST | | | | | | | | | | | | |
| TBA | | | | | | | | | | | | |
| Totals | 45 | 7-22/.318 | 6-21/.286 | 0-0/.000 | 0-4-4 | 4-0 | 0 | 2 | 1 | 2 | 20/1.7 | |

2014-15 (SOPHOMORE)

Netted a career-high eight points and hit a pair of three-pointers in a win over Champion Baptist... hit a three-pointer in an overtime win over UT Arlington... drilled a three-pointer and also rejected a shot against Robert Morris at the Battle 4 Atlantis

2013-14 (FRESHMAN)

Redshirted... will still have four years of eligibility remaining

HIGH SCHOOL

Played three seasons at Sterlington High School ... Guided the Panthers to a 25-8 record as a senior and a second round appearance in the Louisiana High School Athletic Association playoffs ... Averaged 12 points and 3 assists per game his senior year ... Earned All-District honors from 2010-2013



ULM Warhawks Men's Basketball

University of Louisiana at Monroe



32 Justin Roberson

Junior | Guard | 6-1 | 185
Natchitoches, La. | Western Texas

| | Season-High | Career-High |
|--------|-------------------------|-------------------------|
| Pts | 19, vs. CEBC (12/16/14) | 19, vs. CEBC (12/16/14) |
| FG | 8, vs. CEBC (12/16/14) | 8, vs. CEBC (12/16/14) |
| 3FG | 1, five times | 1, five times |
| FT | 8, vs. UALR (1/17/15) | 8, vs. UALR (1/17/15) |
| Ast | 6, vs. RMU (11/27/14) | 6, vs. RMU (11/27/14) |
| Reb | 7, two times | 7, two times |
| Blocks | 2, vs. RMU (11/27/14) | 2, vs. RMU (11/27/14) |
| Steals | 4, at TXST (1/10/15) | 4, at TXST (1/10/15) |
| Min | 32, two times | 32, two times |

| Opp | GS | Min | FG-FGA/Pct. | 3FG-FGA | FT-FTA/PCT | O-D-T | PF-FO | A | TO | Blk | Stl | Pts/Avg |
|---------------|-----------|------------|--------------------|------------------|-------------------|----------------|-------------|-----------|-----------|----------|-----------|----------------|
| UAB | * | 32 | 6-11/.545 | 0-0/.000 | 6-6/1.000 | 1-3-4 | 1-0 | 5 | 1 | 0 | 2 | 18/18.0 |
| CH BAP | * | 15 | 4-5/.800 | 0-0/.000 | 1-2/.500 | 0-1-1 | 1-0 | 2 | 1 | 0 | 3 | 9/13.5 |
| Florida | * | 26 | 1-6/.167 | 0-1/.000 | 0-0/..000 | 0-1-1 | 5-1 | 0 | 3 | 0 | 2 | 2/9.7 |
| C. Car | * | 29 | 4-7/.571 | 1-3/.333 | 2-2/1.000 | 0-7-7 | 2-0 | 2 | 2 | 0 | 0 | 11/10.0 |
| RMU | * | 31 | 6-10/.600 | 0-2/.000 | 0-0/.000 | 0-4-4 | 3-0 | 6 | 3 | 2 | 0 | 12/10.4 |
| La. Col | * | 26 | 5-7/.714 | 0-1/.000 | 2-2/1.000 | 0-3-3 | 4-0 | 1 | 5 | 0 | 2 | 12/10.7 |
| NSU | * | 28 | 4-6/.667 | 0-1/.000 | 0-2/.000 | 0-3-3 | 4-0 | 2 | 3 | 0 | 1 | 8/10.3 |
| N.M. | * | 32 | 3-11/.273 | 0-1/.000 | 0-1/.000 | 0-4-4 | 0-0 | 1 | 2 | 0 | 2 | 6/9.8 |
| CE BAP | * | 31 | 8-12/.667 | 1-2/.500 | 2-2/1.000 | 0-4-4 | 2-0 | 4 | 0 | 0 | 2 | 19/10.8 |
| LSU-A | * | 30 | 2-6/.333 | 0-0/.000 | 2-3/.667 | 0-7-7 | 5-1 | 4 | 2 | 0 | 0 | 6/10.3 |
| Samford | * | 25 | 1-10/.100 | 1-1/1.000 | 0-0/.000 | 3-3-6 | 0-0 | 2 | 3 | 0 | 1 | 3/9.6 |
| Ga. St. | | 13 | 0-5/.000 | 0-1/.000 | 0-1/.000 | 0-0-0 | 2-0 | 0 | 0 | 0 | 0 | 0/8.8 |
| Ark. St. | | 19 | 4-7/.571 | 0-0/.000 | 2-3/.667 | 0-1-1 | 2-0 | 1 | 0 | 0 | 0 | 10/8.9 |
| UTA | | 23 | 2-10/.200 | 1-3/.333 | 0-0/.000 | 1-5-6 | 5-1 | 1 | 1 | 0 | 0 | 5/8.6 |
| TXST | | 17 | 5-9/.556 | 0-1/.000 | 0-0/.000 | 0-2-2 | 5-1 | 2 | 3 | 0 | 4 | 10/8.7 |
| Troy | | 26 | 4-9/.444 | 1-1/1.000 | 0-0/.000 | 0-1-1 | 1-0 | 0 | 0 | 0 | 1 | 9/8.8 |
| UALR | | 24 | 2-6/.333 | 0-3/.000 | 8-9/.889 | 0-3-3 | 1-0 | 1 | 3 | 0 | 0 | 12/8.9 |
| UL-L | | | | | | | | | | | | |
| UTA | | | | | | | | | | | | |
| Ga. So. | | | | | | | | | | | | |
| Troy | | | | | | | | | | | | |
| USA | | | | | | | | | | | | |
| UALR | | | | | | | | | | | | |
| Ga. So. | | | | | | | | | | | | |
| UL-L | | | | | | | | | | | | |
| App. St. | | | | | | | | | | | | |
| Ark. St. | | | | | | | | | | | | |
| USA | | | | | | | | | | | | |
| App. St. | | | | | | | | | | | | |
| Ga. St. | | | | | | | | | | | | |
| TXST | | | | | | | | | | | | |
| TBA | | | | | | | | | | | | |
| Totals | 11 | 427 | 61-137/.445 | 5-21/.238 | 25-33/.758 | 5-52-57 | 43-4 | 34 | 32 | 2 | 20 | 152/8.9 |

JUNIOR (2014-15)

Put in 12 points and drained a career-high eight free throws (8-9) vs. UALR at home... scored 10 points against both Arkansas State and Texas State... career-high 19 points and eight made field goals in the win over Central Baptist... reached double-figures with 12 points on 5-7 shooting against Louisiana College... registered a team and game-high of 18 points, including a perfect 6-6 FT, to go along with his five assists in a win over UAB... recorded a career-high three steals against Champion Baptist... netted 11 points and grabbed a career-high seven rebounds against Coastal Carolina... drained 12 points with a career-high six assists and two blocks against Robert Morris

PREVIOUS SCHOOL

Led Western Texas Junior College to a 23-8 record and averaged 14.2 points, 3.5 rebounds, 4.0 assists and 2.0 steals per game... named to the All-Western Texas Conference First-Team... memorable dunk over a 6-8 post player after driving down the lane

HIGH SCHOOL

Lettered in both basketball and football at Natchitoches Central HS and earned All-State in both sports

Individual Career Totals for Returning Student-Athletes

Only includes statistics at ULM

Points

| | |
|-------------|-----|
| T. Ongwae | 675 |
| M. Williams | 359 |
| N. Coppola | 339 |
| D. Harvey | 150 |
| C. Amajoyi | 101 |

Steals

| | |
|-------------|----|
| T. Ongwae | 42 |
| N. Coppola | 28 |
| M. Williams | 17 |
| D. Harvey | 17 |
| C. Amajoyi | 10 |

Field Goals M-A

| | |
|-------------|---------|
| T. Ongwae | 240-554 |
| M. Williams | 148-282 |
| N. Coppola | 119-304 |
| D. Harvey | 61-110 |
| C. Amajoyi | 29-85 |

Free Throws M-A

| | |
|-------------|---------|
| T. Ongwae | 175-205 |
| M. Williams | 61-98 |
| N. Coppola | 49-74 |
| C. Amajoyi | 28-38 |
| D. Harvey | 25-45 |

Rebounds

| | |
|-------------|-----|
| T. Ongwae | 268 |
| M. Williams | 195 |
| D. Harvey | 152 |
| N. Coppola | 113 |
| C. Amajoyi | 75 |

Three-Pointers M-A

| | |
|-------------|--------|
| N. Coppola | 50-138 |
| T. Ongwae | 31-123 |
| C. Amajoyi | 15-46 |
| M. Williams | 2-8 |

Assists

| | |
|-------------|-----|
| N. Coppola | 164 |
| T. Ongwae | 86 |
| D. Harvey | 23 |
| C. Amajoyi | 22 |
| M. Williams | 17 |

Games/Starts

| | |
|-------------|-------|
| T. Ongwae | 44/44 |
| N. Coppola | 44/44 |
| D. Harvey | 44/9 |
| M. Williams | 41/32 |
| C. Amajoyi | 32/15 |

Blocks

| | |
|-------------|----|
| M. Williams | 39 |
| T. Ongwae | 28 |
| D. Harvey | 21 |
| C. Amajoyi | 2 |

Minutes

| | |
|-------------|------|
| N. Coppola | 1488 |
| T. Ongwae | 1409 |
| M. Williams | 939 |
| D. Harvey | 654 |
| C. Amajoyi | 468 |

ULM's 2014-15 Record When it Has...

Five Double-Figure Scorers (2-0)

vs. Northwestern State
vs. UALR

Three Double-Figure Scorers (3-0)

vs. LSU-Alexandria
at UT Arlington
at Texas State

Four Double-Figure Scorers (5-0)

at UAB
vs. Champion Baptist
vs. Louisiana College
vs. Central Baptist
vs. Arkansas State

Two Double-Figure Scorers (1-4)

at No. 8 Florida
vs. Coastal Carolina
vs. Robert Morris
at Samford
vs. Troy (win)

No Double-Figure Scorers (0-2)

at New Mexico
at Georgia State



ULM Warhawks Men's Basketball

University of Louisiana at Monroe

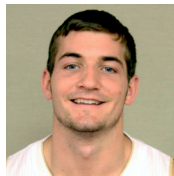


Media Roster



0 Marvin Williams

Senior | Center
6-8 | 245
Memphis, Tenn.
NW Florida State College



11 Nick Coppola

Sophomore | Guard
5-11 | 190
Richmond, Va.
Benedictine Prep



1 Alex Brown

Freshman | Guard
6-4 | 185
Vernon, Fla.
Vernon HS



12 Tylor Ongwae

Senior | Forward
6-7 | 205
Eldoret, Kenya
Ranger College



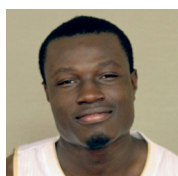
2 DeMondre Harvey

Sophomore | Forward
6-7 | 210
Minden, La.
Pearl River CC



13 Majok Deng

Junior | Forward
6-10 | 190
Adelaide, Australia
Indian Hills CC



3 Prince Cooper

Sophomore | Guard
6-4 | 215
Freeport, Bahamas
Miami-Dade College



20 Chinedu Amajoyi

Senior | Guard
6-3 | 195
Rancho Cucamonga, Calif.
Kilgore College



4 Mack Foster

Junior | Guard
6-2 | 185
Beulah, Miss.
East Mississippi CC



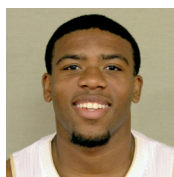
22 Lance Richard

R-Freshman | Guard
5-10 | 170
Monroe, La.
Sterlington HS



5 Jamaal Samuel

Junior | Forward
6-9 | 205
New Orleans, La.
Illinois State



32 Justin Roberson

Junior | Guard
6-1 | 185
Natchitoches, La.
Western Texas



10 Roderick Taylor

Freshman | Forward
6-8 | 210
Harker Heights, Texas
Harker Heights HS



Head Coach Keith Richard

ULM '82
Fifth Year at ULM
14th Year Overall
Baton Rouge, La.